

# DERBY'S SEND LOCAL OFFER



Welcome to the Spring edition of our Local Offer newsletter.

As ever there's lots going on in Derby at the moment to let you know about.

Since our last newsletter there's been a lot of discussion about SEND services and provision following the release of the long-awaited [SEND review and green paper](#). Don't forget to have your say as part of the consultation, to use this as an opportunity to re-shape how our children and young people are supported.

Locally, we've not been waiting for this review and we continue to work together to try to improve the experiences and outcomes for everyone in the City with SEND. There's more about what we've been doing through our panel processes and DerbySAL service later in the newsletter

As ever, if you've got something to share through the Local Offer newsletter, website, or social media channels, then please get in touch at [local.offer@derby.gov.uk](mailto:local.offer@derby.gov.uk).

## Ambitious about autism

Ambitious about Autism has launched the UK's first online platform for autistic young people – please find further details at <https://ambitious-youth-network.ambitiousaboutautism.org.uk/page/ambitious-youth-network>

This will offer autistic young people aged 16 to 25 a safe and moderated online space to help them understand their autistic identity and reduce isolation and loneliness that many feel. Young people will be able to take part in peer support sessions, share experiences and find volunteering, work experience and employment opportunities. There will also be opportunities for them to work together and campaign for change.



# Glory, Glory SEN United!



SEN United is a charity football team made up of parents, staff and those who have a connection to anything special educational needs and disabilities in Derby.

So far, they've raised an incredible £7,000 for special educational provision in the City.

The team is the brainchild of David Martins, a father to a child with special educational needs who first attended St Giles School and now attends St Andrew's Academy.

We asked David to tell us more about the team:

"The team is made up of parents of children of SEN, headteachers, teachers and teaching assistants from St Giles, St Andrew's Academy, St Clare's, Kingsmead and Ivy House, as well as like-minded people at Rolls Royce. The group have also taken it upon themselves to raise money by running marathons and organizing race nights. We also have members of TeacherActive, one of the UK's biggest educational recruitment agencies and Derby County Community Trust's Down Syndrome Active programme.

The first goal was to establish a link between the SEN schools in Derby. This quickly led to raising funds for projects at St Giles, that ranged from a specialist kitchen to a state-of-the-art Multi Use Games Area.

Our current project is to help generate sufficient funds for a bespoke outdoor gym for the children of St Andrew's Academy to enjoy and benefit from.

We have various ways of raising money, primarily we use charity football matches, but we also have had donations from key people through marathons, race nights and a fundraising event"

If you want to support the team and to donate to this brilliant cause visit:

[https://www.justgiving.com/crowdfunding/david-martins-2?utm\\_term=35z5BYbMZ](https://www.justgiving.com/crowdfunding/david-martins-2?utm_term=35z5BYbMZ)



Follow the team at: <https://senunitedfc.wixsite.com/website>

Twitter: @SenUTD

Facebook: @senunited



# Supporting our SENCOs – DerbySAL

Since Derby SALs launch in August we have supported over 70 schools with over 200 individual children and young people. It has been a pleasure getting to know so many SENCO's and supporting them with implementing the Graduated Response, signposting, and supporting to access services and provisions, reviewing, and evidencing interventions and creating supportive teams of support around children and young people.

From these calls 34% of children have had SEMH as their primary area of need, and from talking to SENCOs we know that this is true and that the impact of the last few years has really affected all children.

Every child and young person is unique, and their own mental health unique to them. We have seen from some of the amazing SENCOs we work with, the difference that is made by caring professionals in schools. Some of the simple but effective things that our schools are doing include:

- taking time to talk and listen to children,
- pulling together the right support at the right time
- working through the graduated response and continuing with the assess, plan do, review process in terms of interventions and reasonable adjustments
- keeping lines of communication with parents open
- learning from one another and continuing to make young people feel heard and seen

If you are a SENCO and need support, signposting, advice, guidance or to talk through any issue regarding SEND (whether individual children or whole school) then please contact Derby SENCO Advice Line.

- Tel: 01332 956 956 9am – 5pm
- [Or request a call back on our webform](#)
- Or send us an email at: [DerbySAL@derby.gov.uk](mailto:DerbySAL@derby.gov.uk)

The new mental health pathway document has recently been received by schools. It brilliantly lays out both the urgent and non-urgent pathway regarding mental health alongside some brilliant suggestions, websites, and recommendations.

Some brilliant SEMH support services from the Local Offer:

- Derby & Derbyshire - Emotional Health & Wellbeing  
[www.derbyandderbyshireemotionalhealthandwellbeing.uk](http://www.derbyandderbyshireemotionalhealthandwellbeing.uk)
- <http://www.youngminds.org.uk/>
- Specialist Community Advisors (SCAs): Derbyshire Healthcare NHS Foundation Trust [www.derbyshirehealthcareft.nhs.uk](http://www.derbyshirehealthcareft.nhs.uk)
- Build Sound Minds Overview | Action for Children
- <https://weheartcbt.com/low-mood>



## Local Offer User Group

The latest local offer user group was held 04 March 2022.

The User Group meets four times a year to discuss and approve new and revised content for the Local Offer webpages. This is in collaboration with parent carers, professionals, and other representatives from related organisations. We are always looking for parent carers interested in joining the group. Please email [Local.Offer@derby.gov.uk](mailto:Local.Offer@derby.gov.uk) to express your interest.

[Find out more about our latest meeting here](#)



# Improving our Inclusion Support Panel

We have been making changes to the way our Inclusion Support Panel works to help to improve the experience of parents and carers, children and young people, and schools and settings.

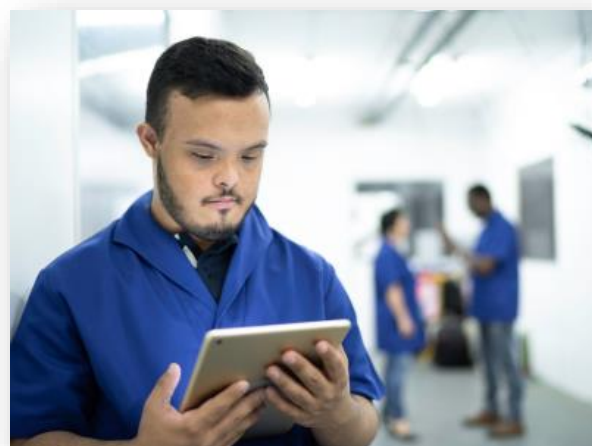
A key aim is to improve the way that we communicate our decisions and plan for a child's support moving forwards, no matter what our panel decision is. We want your feedback from your experiences of our panel so we can continue to learn and develop our processes.

Our Inclusion Support Panel used to be known as EHC Assessment Panel. Its main purpose is to consider requests for education, health, and care (EHC) assessment requests, and to identify the right level of support for the child or young person. Panel members will try to make recommendations about other support available to help the child or young person to access the right services at the right time to achieve the best possible outcomes.

[Young people can take part here](#), [parents and carers can take part here](#) and [schools, colleges, and nurseries can take part here](#)



## Employers invited to discover the benefits of employing people with special educational needs and disabilities



The D2N2 Careers Hub is inviting employers in Derbyshire and Nottinghamshire to a special event on Friday 13 May, 9.30am-3.30pm at the University of Derby to celebrate people with SEND and learn more about opening their workplace to inclusive recruitment. Nationally, just 6% of young people with SEND are in secure employment. The D2N2 Careers Hub is encouraging employers to explore the opportunities available in this large potential pool of untapped talent. Let's Talk SEND will provide talks, workshops, and networking with the chance to talk to young people about their experiences, the skills they've learned and the benefits it's brought to the businesses they've worked in.

The event, which is funded by the D2N2 Local Enterprise Partnership (LEP) and The Careers & Enterprise Company, is free to attend but booking is required. It is suitable for anyone who has either already employed people with SEND or who would like to know more about doing so.

Fiona Baker, Head of People and Skills at D2N2 LEP and a keynote speaker at the event, said: "As part of our People and Skills strategy, D2N2 wants to encourage employers to widen their search for skilled talent to include those who might be excluded from traditional recruiting processes for a variety of reasons "We are confident that anyone who attends Let's Talk SEND will come away feeling inspired and excited about the opportunities for working with young people with SEND and the wide range of benefits both parties experience from it."

[Find out more and book your place here.](#)

# Introducing the Living My Best Life – Derby Inclusion Tool

Over the past couple of months, we've been trialing a new tool to support parents, and schools to identify the needs of children and young people with SEND. The Derby Inclusion Tool (DIT) is currently being rolled out to all schools across the city to give a more consistent approach to how we carry out the graduated response as a local area.

What is it?

- The approach centers on a tool which allows a better understanding and quantification of the needs of children with SEND
- Provides an evaluation of their educational and home settings readiness to meet these needs
- Regular use allows changes in needs over time to be dynamically tracked, and so enables professionals and families to provide tailored support
- Aims to enhance the experiences and confidence of our families and SENCOs by shaping and supporting more positive conversations around supporting the needs of the children

At an individual child level:

- Assists with the early identification of a child/young person's needs and provides practical strategies and interventions to implement
- Improves positive dialogue / collaborative planning with parents, carers, and professionals
- Strengthens EHCP requests, annual review and transitions processes and planning

At a school or setting level:

- Promotes greater understanding of the SEN Cohort and how 'ready' the setting is to meet needs-supporting planning on workforce development, recruitment, and budget setting.
- Improves children/young people's Inclusion and outcomes
- Provides SENCOs with a Peer Support network to share challenges and best practice

## Training for schools & settings

As the approach is rolled out across the city, it will increasingly be used as part of many processes that you have involvement with. To ensure you are familiar with the tool and approach we are offering an introductory training session for staff. This will offer:

- A demonstration of the tool and introduction to how it is used
- How it is used at an individual and setting level (including how it aids settings to improve their readiness to meet needs.

You will shortly receive an invite to training, please choose one date and prioritise your attendance.

WE LOOK FORWARD TO SEEING YOU THERE!

\*Once fully rolled out the Derby Inclusion Tool will be used as a standard approach in the EHC needs assessment request, and review process.

## What parents say . . .

"I really love this, it's really helped me to think about the support my daughter needs and the areas that I need help with".

## What schools say . . .

"It really allowed us to reflect on the student and their underlying needs and helped us talk to the parent who shared strategies they use at home that we will adopt in school".

# In short | Derby news and events

- Reading Well for young people recommends expert endorsed books about mental health, providing 13- to 18-year-olds with advice and information about issues like anxiety, stress and OCD, and difficult experiences like bullying and exams. Just go along to your local library and borrow these books for free.
- Get creative at QClub Minis! This creative session is for preschool children with autism, disabilities and additional support needs and their parents. No formal diagnosis required, just drop-in. When: Every Tuesday 10.00am-12noon Where: The Quad, Market Place, Cathedral Quarter, Derby, DE1 3AS. For more information: [creativewellbeing@derbyquad.co.uk](mailto:creativewellbeing@derbyquad.co.uk)
- Healthwatch is relaunching its Mystery Shopper surveys after a visit to the GP, hospital, dentist, optician or pharmacy as a quick and easy way to tell them observations and experiences of those services. [Scroll down the page to find which survey you want.](#)
- CP Teens UK is running free online workshops on topics such as navigating the transition into adulthood, being independent, securing funding/PA's and going to University. Starting at 7.00pm online. [Find out more:](#)
  - Wednesday 8th June - Care Funding & Your Rights
  - Monday 19th September - Getting the Best University Experience
  - Monday 7th November - PA Recruitment & Managing the Relationship
- SHOUTaboutSEND is an inclusive event for all ages and abilities to come together and celebrate all things Sport, SEND & Inclusion!  
When: Saturday 14 May 10.30am - 1.00pm  
Where: Derby Rugby Club, Haslams Lane, Derby, DE22 1EB.  
[Book here](#) or using the QR code below:



# Changing places

In July 2021 DLUHC published the Changing Places Fund Prospectus inviting councils to submit expressions of interest for funding to create new Changing Places Toilet facilities. Following the outcome of the Round 1 assessment process the government has announced that 191 unitary and district councils across England have been allocated £23.5 million of funding to increase the number and spread of Changing Places Toilet facilities across England.

The Chancellor confirmed in his Spring Statement that Derby city has been awarded £200k for five Changing Places toilets!

[Changing Places Fund: local authority allocations - GOV.UK \(www.gov.uk\)](https://www.gov.uk/government/news/changing-places-fund-local-authority-allocations)

[Changing Places toilets for disabled people - Derby City Council](#)

This is your newsletter...

Get involved by sharing your stories and events

Email: [local.offer@derby.gov.uk](mailto:local.offer@derby.gov.uk)

