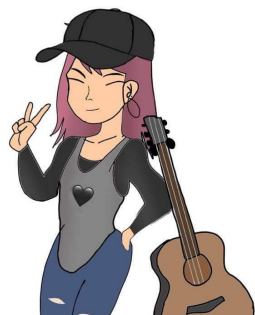
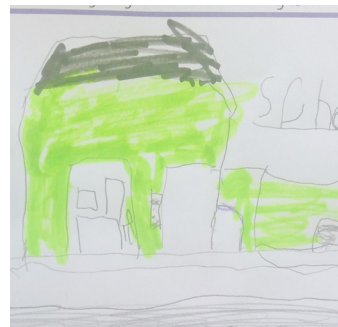


# Derby City Local Area SEND Strategy



"I understand I am different at times"

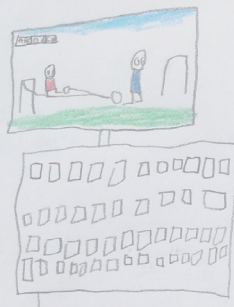
"I need to find things I am good at"



"I love playing with my friends"



"If we work together anything is possible"



LIVING MY BEST LIFE

"I need to be careful of my stress levels"

"I want to share my experiences"



"I behave differently but have not been able to explain why"

"Diagnosis has been hugely important to me"

"I need my routine"



Cover images and quotations provided by Derby City SEND pupils.

November 2020



# Foreword

As the Strategic Director of People's Services I am privileged to oversee the Council services working to support the children, young people and families in Derby City. Moving forwards from our Local Area Inspection in June 2019 and the related Derby City Local Area SEND Written Statement of Action I am delighted to present our strategy for Derby City Local Area SEND.

We have worked closely with our partners and stakeholders to understand the SEND needs in our City, embracing co-production, as reflected in the co-production charter that sits alongside this strategy, combined with data and technical knowledge from stakeholders across the City.

This high level strategy provides shared and clear direction for Local Area SEND. It outlines the five priority areas that have emerged, what this will look like in practice and most importantly how this will improve the lives of children, young people and their families with SEND in Derby City - the core ambition of this strategy.

Publishing this strategy and framework for joint delivery is another step in our ongoing improvement journey, however we are committed to building on these foundations as we continue to improve SEND processes, experiences and outcomes for children, young people and their families in Derby City, now and in the future.



**Andy Smith**  
Strategic Director of People Services,  
Derby City Council

NHS Derby and Derbyshire Clinical Commissioning Group are pleased to be a contributor to the Derby City SEND Strategy for 2020-23. It is through committed system-wide partnerships that the vision, aspirations and priorities outlined in this strategy will deliver the continued improvement in support and provision for children and young people with SEND and their families.

By fully establishing SEND priorities in the work of Joined up Care Derbyshire, we are working together to improve integrated care and delivery of our shared strategies. The NHS Long Term Plan has a number of policy drivers which provides us with the opportunity to strengthen alignment to our SEND Strategy. We will be demonstrating this through integrated governance, for example targeted mental health work in schools.

The work that has been planned and undertaken to date in strengthening the graduated offer, is essential in managing demand across the system and in delivering a better experience for children, young people and their parents/carers. NHS Derby and Derbyshire CCG is committed to continuing to strengthen relationships with our partners and the many agencies that have a vital role to play in making Derby City a great place to grow up for our children and young people.



**Dr Chris Clayton**  
Chief Executive Officer,  
Derby and Derbyshire Clinical Commissioning Group

# Overview

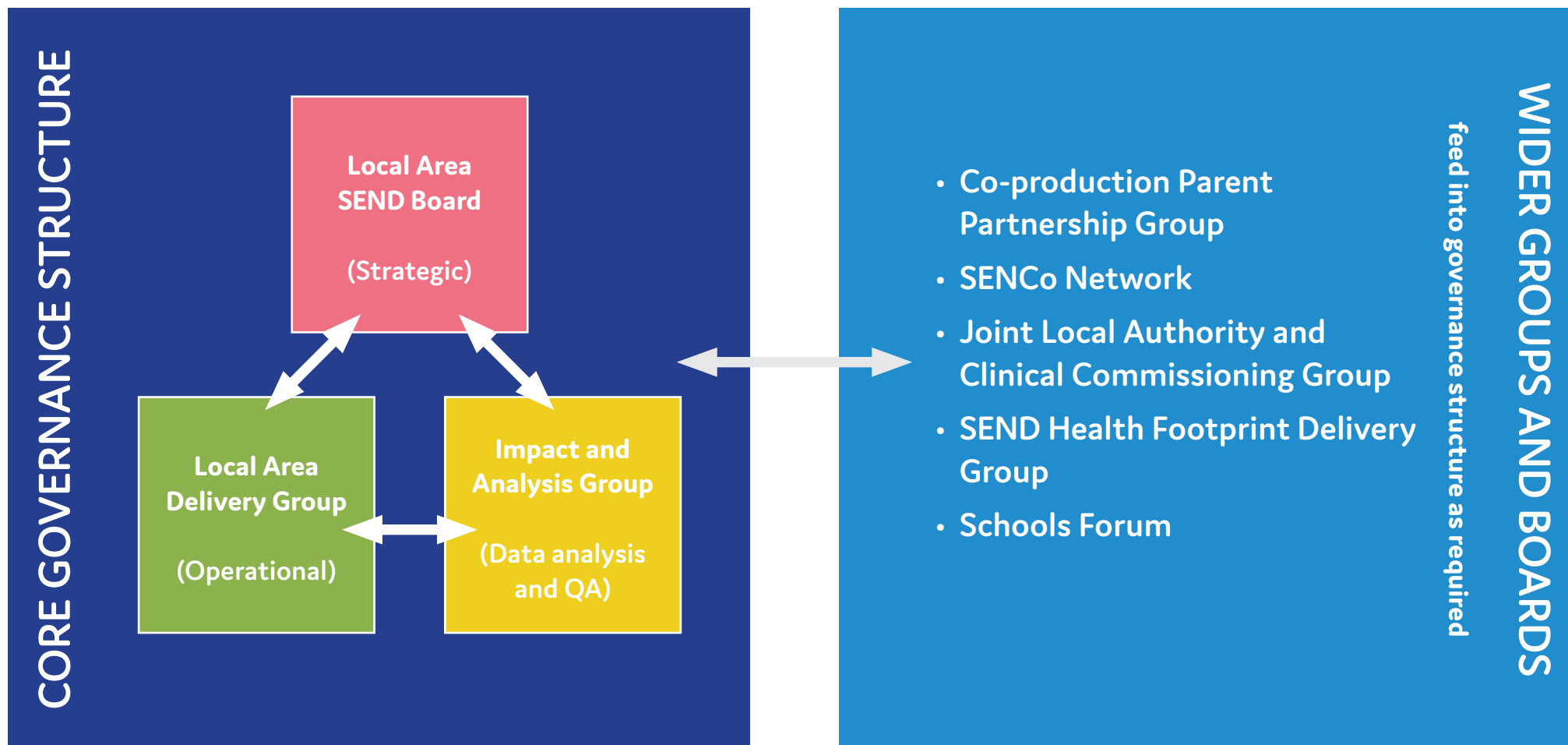
The priorities and vision have been developed with all partners through a series of workshops, meetings and discussions. Some are about improving how we work together and others are about improving the lives and outcomes for children and young people with SEND. Our vision, Living My Best Life, is what we would want for every child or young person in our city.



# How are we going to deliver this?

## Robust Local Area SEND Governance

We have established a robust governance structure in which all stakeholders participate as equal partners.



## Commitment to co-production

Co-production is our way of working as a local area that puts children, young people and their families at the centre of all the work we do. It is built on the understanding that everyone is involved, at all possible stages, as equal partners.

It captures and uses the experiences and strengths of children, young people, families, communities and those involved in SEND across the local area, to improve the services they use.

It means developing trust through listening to, working with and valuing each other, as well as understanding and developing services that reflect the journey of those who use them.

The principles embodied in this Charter have been developed in co-production and describe the commitment we have all made as a local area to work together.

To enable us to create strong partnerships everyone is committed to:

- Listening and allowing all voices to be heard
- Respecting opinions and valuing all contributions
- Being open minded and learning from each other
- Taking responsibility for how we work together and supporting each other to understand the approach.

All partners collaborate and work jointly at the earliest possible stages to achieve shared outcomes.

We embed co-production by pushing the boundaries of our traditional ways of working together, acknowledging that the decisions and outcomes will be better as they are made by all partners, as equals.

The full document can be found at on the Local Offer website. If you would like to get involved in Local Area SEND development please contact [paula.nightingale@derby.co.uk](mailto:paula.nightingale@derby.co.uk).

## Joint action planning for effective service delivery

This strategy will build on the Derby City Local Area SEND Written Statement of Action through development of a co-produced Local Area SEND strategic action plan for 2020-2023. Further details on this will be published in due course.

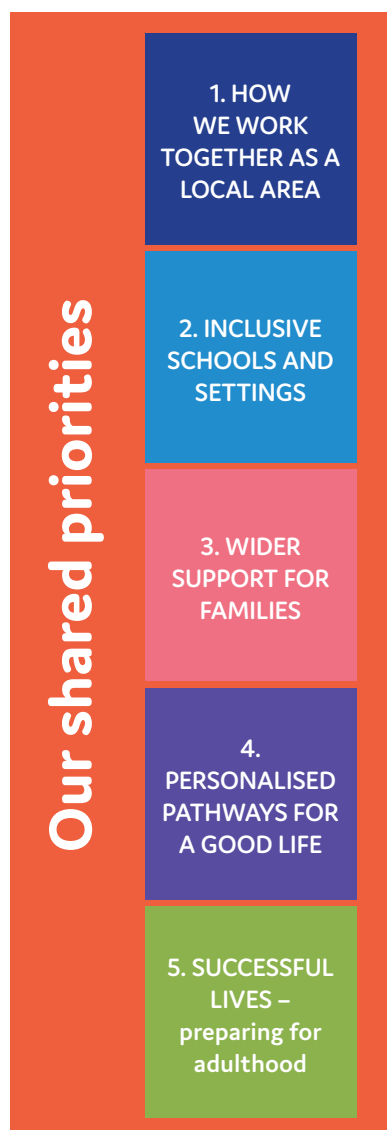
## Effective communications and engagement

This is essential to meeting our aspirations for children, young people and families with SEND. This is being developed as part of our work on the Written Statement of Action and we will continue to develop this framework as part of our commitment to ongoing continual improvement.

## Data monitoring and quality assurance

In developing this strategy we have scrutinised key data, including our Joint Strategic Needs Assessment (JSNA) and SEN2, and sought the views of our stakeholders to identify the areas of need within Derby City. These are autism, moderate learning difficulties, speech, language and communication difficulties and social, emotional mental health. The Impact and Analysis Group, within the governance structure, has been established to ensure that Local Area data is reviewed continually, including high level outcomes in health, education and social care, so that positive impact is made in these key areas alongside effective implementation of this strategy. A Local Area SEND performance and quality dashboard and a quality assurance framework are already under development to ensure we are measuring and monitoring the impact of our work.

# How will we know we are making a difference?



There is **clear evidence** that:

- Stakeholders are participating in Local Area SEND boards and groups as equal partners.
- There is continued development of the graduated approach and embedding of the best international practice in the education system.
- There is a choice of accessible communication for all.
- There are integrated pathways for education, health and social care.
- Preparing for Adulthood outcomes are focussed on person centred reviews from year 9 onwards.
- Careers information and guidance supports young people with SEND.
- Options for independent living are considered early.

**Stakeholder feedback** tells us that parents, carers and young people feel:

- Respected as Experts by Experience and that they are equal partners in Local Area SEND.
- Their needs are recognised early as possible and they are being treated as individuals.
- Support if offered to meet needs in the mainstream school or setting and the services work for the whole family close to home.
- Supported through advocacy, focussed on supporting the whole family, sibling groups and friendship groups for young people.
- Barriers to learning are removed wherever possible.
- They are having a good life.
- They are supported to manage their own health as they move into adulthood.
- They have the careers information they need at the right time.
- They are prepared for living independently.
- They are supported in the areas of friendships, relationships and community inclusion.

Our key **SEND performance data** will show improvement, progressing in line with or exceeding other national and comparator authority statistics.

Our **quality assurance framework and processes** demonstrate our services and support meets statutory requirements and is of the highest standard possible.

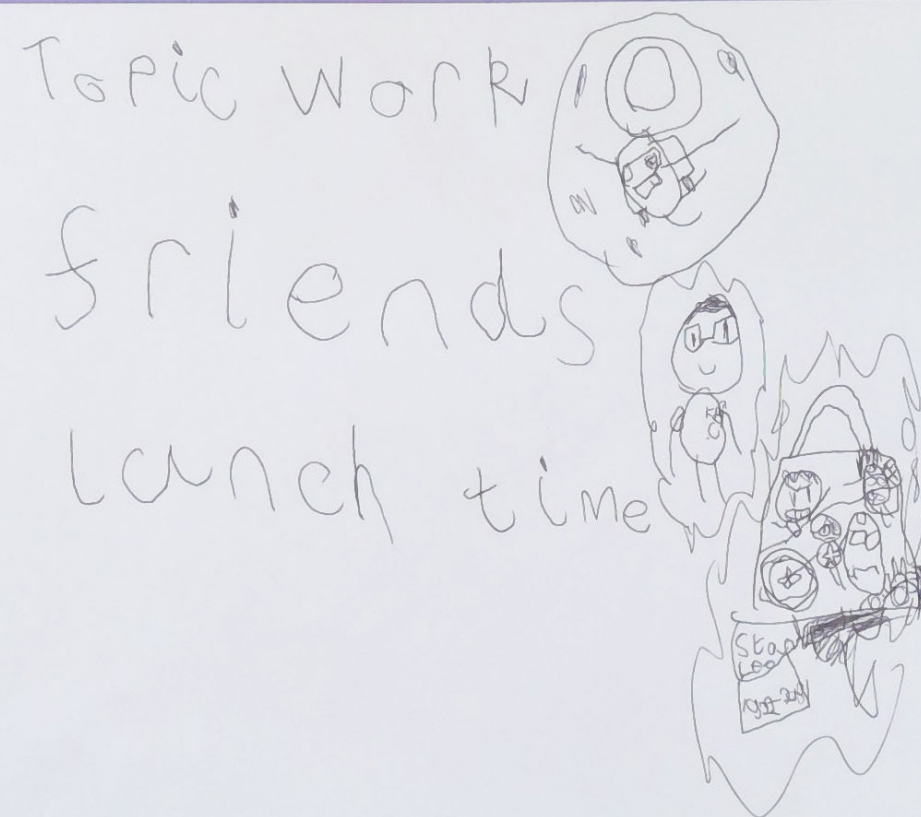


## What is next for Derby City Local Area SEND?

As a Local Area we will work together to create and deliver a Local Area SEND strategic action plan for 2020-2023 to ensure we can deliver our ambitious plans to continue to improve outcomes for children, young people and families with SEND in Derby City.



What I love about going to school in Derby is...



## With special thanks to

Children, young people and families, education providers and settings, further education providers, alternative provisions, wider voluntary and community sector supporters and health and social care commissioners, providers and practitioners.



LIVING MY  
BEST LIFE

