

4. Parks and Gardens

04

Introduction and definition

- 4.1 This type of open space (as defined by PPG17) includes urban parks and formal gardens that provide opportunities for various informal recreation and community events.
- 4.2 In line with the supporting text for Policy L2 in the *City of Derby Local Plan Review (2006)*, for the purposes of this study parks have been separated into the following hierarchy:
 - City Parks – sites of more than 60 hectares serving a catchment of around 5,000 metres radius. These provide a wide range and high standard of complimentary facilities of broad interest to visitors
 - District Parks - between 20 and 60 hectares serving a catchment of around 1200 metres radius. These provide a more local function than City Parks, but should still contain a reasonable range of facilities for children's play and adult recreation
 - Neighbourhood Parks - between 2 and 14 hectares serving a 400 metre radius catchment. These provide for people's daily informal sport and recreation needs and should contain children's play facilities, kickabout areas, sports pitches, where space allows, and pleasant seating areas
- 4.3 Parks often contain a variety of facilities and amenities, including some that fall within different categories of open space (for example, children's play facilities, sport pitches and wildlife areas). For classification purposes, the different open spaces within parks have been separated according to the PPG17 typology under which they most appropriately fall. Large green areas, footpaths, lakes and less dense woodland will provide the park area (total hectares) and the other facilities will be calculated separately under their own typology classification. This ensures that open space sites are not counted twice within this study.
- 4.4 Parks provide a sense of place for the local community, help to define the character and break up the urban area and help to address social inclusion issues within wider society. According to the Park Life Report (GreenSpace, June 2007), 83% of those questioned considered that parks are a focal point of community life.
- 4.5 Reflecting this, parks are a highly valued resource in Derby. This is illustrated by the fact that city, district and neighbourhood parks are the most frequently used types of open space in the City. Over a quarter of residents indicate that they use city parks more frequently than any other type of open space.
- 4.6 In addition to recreational opportunities, parks provide structural and landscaping benefits to the surrounding local area. They also frequently offer ecological benefits in urban areas and are a particularly valuable resource in a compact city with a dense population such as Derby.
- 4.7 Appropriate provision of green space can also contribute to the health agenda. Local open space provides residents with opportunities to be active and therefore contributes to the some of the targets of Derby City Council, which seeks to become the most active city in the country by 2015.

- 4.8 The provision of local open space can also support a reduction of the impact of climate change. Derby City Council is committed to mitigating the effects of climate change. The Derby City Climate Change Board was set up in 2007 to implement Derby's Declaration on Climate Change. The Board identifies projects, processes and progress in relation to tackling climate change. The effective provision of parks will be a key means of ensuring that the Council continues its commitment to adapt to climate change. Parks and other open spaces will also be central in the drive to minimise flood risk. Open space will be particularly important in the areas of the city identified as high flood risk.
- 4.9 This section sets out the quality, quantity and accessibility of parks and gardens across Derby.
- 4.10 As well as considering the provision of parks across the City, it is important that the interrelationship of these facilities with other types of open space (in particular those providing opportunities for informal recreation – natural and semi natural spaces and amenity green spaces) is considered. In areas deficient in the provision of natural and semi natural open space and amenity green space for example, parks play a vital role in providing residents with access to informal recreation opportunities.
- 4.11 As previously highlighted, parks have been separated into a hierarchy. As a higher order facility, where city parks are located within 480m (the recommended catchment for a neighbourhood park) of residents, this negates the need for a district or neighbourhood park respectively within that area. Similarly, where a district park is located within 480m of residents, this negates the need for a neighbourhood park in that area. As a higher order facility, parks in close proximity to the home also reduce the need to provide amenity green space. This will be returned to in Section 6.

Context

- 4.12 The *City of Derby Local Plan Review 2006 (CDLPR)* outlines standards for quantity and accessibility for parks in the City. The plan emphasises the importance of City Parks in attracting visitors to the City and outlines the role that District and Neighbourhood Parks play in providing local residents with a range of recreational opportunities.
- 4.13 The *CDLPR* emphasises the importance of protecting and enhancing the quality of existing parks and gardens across the City. Policy E22 states that development which harms the character or setting of registered historic parks and gardens will not be permitted. The policy further indicates that the Council will seek to retain, restore, maintain and encourage use of historic parks and gardens.
- 4.14 Policy L4 of the *CDLPR* identifies a number of existing parks that are allocated for extension or open space that is allocated for the purpose of a new park. These will be discussed later in this section as part of the application of the local standards.
- 4.15 The importance of open space in Derby city centre is outlined in the *Derby City Centre Public Realm Strategy*. The strategy identifies the need to increase access to parks and open spaces in the city centre, particularly by maximising the opportunities provided by the River Derwent. Bass's Recreational Ground is identified as a particularly important open space in the city centre.
- 4.16 Reinforcing the priorities of other strategies, the importance of parks in Derby was emphasised throughout consultation. Parks were perceived to offer a diverse and wide range of facilities to residents and City Parks were identified as excellent sites that attract a wide range of people, including visitors.

- 4.17 Throughout consultation, residents spoke about the benefits of parks, in terms of their recreational use (mainly for walking) and also with regard their aesthetic value. Parks were generally perceived to be of good quality, with sites considered to be well kept, clean and tidy. Markeaton Park, Allestree Park and Alvaston Park were identified as high quality sites. It was recognised that there have been significant qualitative improvements to parks across the City in recent years, with Darley Park given as an example. Maintaining and continuing this improvement will be a key challenge for the Council.
- 4.18 Additional consultation highlighted the need to make parks and gardens accessible to all members of the community, for example the older and younger members of the community and people with mobility impairment and learning disabilities. It was highlighted, for members of the public with mobility issues, accessible toilets, better paths and raised planters could be provided. In addition, clear signage would be beneficial to members of the community with learning difficulties. Where possible sensory gardens should be provided for wheelchair users, people with multiple disabilities and people with learning difficulties.

Current Provision - Quantity

City Parks

- 4.19 Allestree Park (39.80 hectares) and Markeaton Park (63.74 hectares) are the only two city parks in Derby. Both of these sites are situated within the North West area.
- 4.20 Allestree Park is an informal space that contains a mixture of parkland and woodland. Facilities located within the park included a pet's corner, fishing lake and golf course. The park is regularly used for relaxation and light recreation, with a variety of organised walks often taking place at the site.
- 4.21 Markeaton Park is one of Derby's largest parks and attracts over 1 million visitors per year, many of whom travel from far afield. The park is located approximately 1.5 miles from the city centre and contains a wide range of facilities, including:
- sports facilities – football pitches, a cricket pitch, tennis courts and pitch and putt;
 - children and young people's facilities – children's play areas (including Mundy Play Centre) and wheeled sports facility (skateboarding, BMX, rollerblading); and
 - tree trail, fishing lake, light railway, café and craft village.
- 4.22 Markeaton Park hosts a variety of events throughout the year. Events include the annual bonfire and fireworks, annual diabetes walk and two yearly Eco Fest.
- 4.23 In addition to the two city parks within Derby City Boundaries, Elvaston Castle Grounds (Elvaston Park) located outside of the city boundary, also serves residents within Derby. This will be returned to later in this section, during the application of standards.
- 4.24 Consultation exhibited a high level of satisfaction with the current provision of city parks. Over two thirds of respondents to the household survey (69%) indicated that the provision of city parks is sufficient. Only 27% of residents stated that provision is insufficient. Nearly two thirds of respondents to the officers' survey (65%) felt that the provision of city parks is sufficient and the current provision of city parks was perceived to be adequate during drop in sessions and workshops.
- 4.25 Although the quantity of city parks was perceived to be adequate in Derby, localised deficiencies were identified by elected members in Blagreaves, Mackworth and Mickleover. Specifically, the need

for a city park in the south west of the City was highlighted. It is important to note however that existing city parks are well used by residents in Derby and evidence suggests that people travel across the City to visit these sites.

District Parks

- 4.26 There are seven district parks in Derby equating to a total 120.34 hectares. District parks range from recreational sites such as Race Course Park (which contains playing fields, an adiZone and an outdoor gym) to sites with more aesthetic and biodiversity/wildlife value, such as Sinfin Moor. Consideration is currently being given as to the possibility of obtaining formal designation of Sinfin Moor as a Local Nature Reserve (LNR).
- 4.27 The quantity of district parks across the City is summarised in Table 4.1 below. It must be noted that in addition to the district parks included within this category, there are also some neighbourhood parks which to a certain extent function as district parks. For clarity, these sites are included within the neighbourhood parks category.

Table 4.1 – Provision of district parks across Derby

Area	Current provision (hectares)	Number of sites	Smallest site (hectares)	Largest site (hectares)	Current population	Provision per 1000 population
Central	-	0	-	-	39,573	0.00
North East	25.26	3	2.10	16.98	52,201	0.48
North West	38.82	2	11.42	27.40	38,277	1.01
South East	52.53	2	22.60	29.93	53,280	0.99
South West	-	0	-	-	38,301	0.00
Overall	116.61	7	2.10	33.66	221,632	0.53

- 4.28 The key issues emerging from Table 4.1 and consultations relating to the quantity of district parks include:
- the current provision of district parks is equivalent to 0.53 hectares per 1000 population;
 - over two thirds of respondents to the household survey (68%) consider the quantity of district parks to be sufficient. These city wide findings are supported in all of the five areas of the city;
 - the greatest level of satisfaction with the quantity of district parks is found in the North West (82% sufficient). It is in this area where the second highest provision per 1000 population is found (1.01 hectares);

- no district parks are located in the Central and South West areas. There may however be some parks adjacent to these areas which serve residents. This will be returned to in the application of the accessibility standards;
 - similar to the findings for city parks, a lack of district parks within their local area was the main reason given by residents who indicated that the provision of district parks is insufficient. This demonstrates that for those residents who perceive quantity to be an issue, local access to district parks is expected;
 - other consultation findings generally reinforce the high level of satisfaction portrayed by respondents to the household survey. Over half of respondents to the officers' survey (53%) considered the provision of district parks to be about right and drop in session comments emphasised the good provision of parks in the City; and
 - although the provision of district parks was generally perceived to be sufficient across the City localised deficiencies were highlighted by elected members. Within the Mackworth and Derwent wards it was stated that there are not enough district parks. However, within the Chaddesden and Blagreaves wards the provision of district parks was perceived to be about right.
- Neighbourhood Parks.

- 4.29 There are a total of 37 neighbourhood parks in Derby. Neighbourhood parks vary significantly in size from 0.19 hectares to 15.56 hectares and provide local informal sport and recreation opportunities for the community.
- 4.30 Although neighbourhood parks serve a smaller catchment than city parks and district parks, many of these sites provide a range of facilities including facilities for children and young people and outdoor sports facilities.
- 4.31 The quantity of neighbourhood parks across the City is summarised in Table 4.2 below.

Table 4.2 – Provision of neighbourhood parks across Derby

Area	Current provision (hectares)	Number of sites	Smallest site (hectares)	Largest site (hectares)	Current population	Provision per 1000 population
Central	31.57	8	1.32	5.54	39,573	0.80
North East	20.30	6	1.30	4.37	52,201	0.39
North West	12.08	5	1.66	3.14	38,277	0.32
South East	36.82	10	0.19	8.13	53,280	0.69
South West	44.00	8	1.35	15.56	38,301	1.15
Overall	144.47	37	0.19	15.56	221,632	0.65

- 4.32 The key issues emerging from Table 4.2 and consultations relating to the quantity of neighbourhood parks include:
- the current provision of neighbourhood parks equates to 0.65 hectares per 1000 population;
 - a difference in opinion regarding the quantity of neighbourhood parks was evident from household survey responses. Half of respondents indicated that the provision of neighbourhood parks is sufficient while 40% of respondents stated that provision of this type of open space is insufficient;
 - in the Central, North East and South West areas, opinions are divided as to the adequacy of current provision, reflecting the overall findings. However, in the North West and South East areas, the significant majority of residents feel that the provision of neighbourhood parks is sufficient (63% and 61% respectively). This is surprising given the lower levels of provision per 1000 people in these areas. However, satisfaction in the South West may reflect the large number of sites in the area. This may suggest that there are deficiencies in neighbourhood parks in some parts of Derby;
 - reflecting this, a lack of neighbourhood parks in the local area was given as the main reason by those who indicated that provision is insufficient. Specifically, a lack of neighbourhood parks in Mickleover, Spondon and Littleover was identified; and
 - the difference in opinion regarding the provision of neighbourhood parks was reflected during other consultations. 44% of respondents to the officers' survey stated provision is about right and 28% indicated that there are not enough neighbourhood parks. Elected members further emphasised this difference in opinion with provision in the Chaddesden, Mickleover and Oakwood wards perceived to be sufficient and in the Mackworth, Blagreaves and Derwent wards insufficient. This suggests that there may be locational deficiencies of neighbourhood parks in Derby and that there are parts of the city where access to these facilities is limited.
- 4.33 Full consultation findings are set out in Appendix E.

Setting quantity standards

- 4.34 The recommended local quantity standard for district parks and neighbourhood parks has been derived from the local needs consultation and audit of provision and is summarised below. Full justification for the local standard is provided within Appendix E. The required increase in provision has been determined using the consultation findings, as well as the level of additional provision required, as a basis.
- 4.35 No local quantity standard has been set for city parks due to the nature of these facilities and the fact that there are only two city parks in the City. Instead it is recommended that existing city parks are protected from development and that proposals to increase provision should be supported. This will be discussed later in the section.
- 4.36 The application of these standards and the identification of specific deficiencies will be addressed later in this section.

Quantity Standard (see Appendices E and F – standards and justification and worksheet)

District parks

Current Provision	Recommended Standard
0.53 hectares per 1000 people	0.54 hectares per 1000 people

Justification

A high level of satisfaction with the current quantity of district parks was portrayed during consultation. Over two thirds of respondents to the household survey (68%) considered the quantity of district parks to be sufficient and this was supported in the five areas.

Other consultation generally supported the high level of satisfaction of respondents to the household survey. Over half of respondents to the officers' survey (53%) considered the quantity of district parks to be about right. The drop in session comments also emphasised the good provision of parks in the City. However, despite a high level of satisfaction, respondents to the elected member's survey highlighted localised deficiencies with a perception of too few district parks in the Derwent and Mackworth wards.

Based on the above it is recommended that the local quantity standard is set slightly above the existing level of provision. Setting a standard at this level allows for a focus on qualitative enhancement and will also enable the identification and resolution of existing deficiencies.

Neighbourhood parks

Current Provision	Recommended Standard
0.65 hectares per 1000 people	0.66 hectares per 1000 people

Justification

Consultation findings highlighted a difference in opinion regarding the provision of neighbourhood parks. Half of respondents to the household survey indicated that the provision of neighbourhood parks is sufficient and 40% of respondents stated that provision of this type of open space is insufficient.

The difference in opinion regarding the provision of neighbourhood parks was reflected during other consultations. 44% of respondents to the officers' survey stated provision is about right and 28% indicated that there are not enough neighbourhood parks. Elected members further emphasised this difference in opinion with provision in Chaddesden, Mickleover and Oakwood perceived to be sufficient and in Mackworth, Blagreaves and Derwent insufficient.

It is recommended that the local quantity standard is set slightly above the existing level of provision. Setting a standard at this level will allow for a focus on enhancing the quality of existing provision but will also enable an increase in provision in areas of deficiency.

Quality

Current position

- 4.37 The quality of city, district and neighbourhood parks was assessed through site visits undertaken by pmpgenesis as well as by consultations carried out across the city.

City parks

- 4.38 Positive perceptions regarding the quality of city parks were evident during consultation. Over half of respondents to the household survey (52%) considered the quality of City Parks to be good and 24% of residents perceived the quality of City Parks to be excellent. Only 2% of respondents considered the quality of city parks to be poor.
- 4.39 The quality of city parks was regularly commended during drop in sessions and workshops and respondents to the officers' survey indicated that the quality of city parks is good or excellent. However, the need to improve ancillary facilities, such as toilets, at city parks was highlighted. This was perceived to be particularly important in light of the use of this type of open space by a large number of visitors.
- 4.40 Markeaton Park and Allestree Park were specifically identified as excellent quality sites throughout consultation.
- 4.41 Supporting the consultation findings, site assessments indicate that the quality of city parks in Derby is excellent. Markeaton Park achieved a quality score of 85% and Allestree Park achieved a score of 88%. Sites were identified as being well maintained, the range of vegetation and woodland at Allestree Park was commended and Markeaton Park was identified as containing good infrastructure such as bins and benches.

District parks

- 4.42 Consistent with that of city parks, positive perceptions regarding the quality of district parks were evident during consultation. Over half of all respondents to the household survey (53%) considered the quality of district parks to be good and a further 15% stated that the quality of district parks is excellent.
- 4.43 Other consultation findings support the household survey results. Over half of respondents to the officers' survey (52%) indicated that the quality of district parks is either good or excellent and elected members suggested that the quality of district parks in their ward is average. Chaddesden Park and Darley Park were identified as high quality sites at all three drop-in sessions.
- 4.44 Site assessments reflect the findings of consultation with the quality of district parks generally rated as good (average quality score 80%). District parks were perceived to be well maintained and contain a good range of vegetation. However, the need for increased infrastructure, such as bins and benches, and improved lighting was highlighted.
- 4.45 Quality scores range from 70% to 100%. Chaddesden Park (100%) was rated as the highest quality district park in Derby and one of the highest quality sites in the City. Alvaston Park and Sinfin Moor Park (both scoring 70%) were the lowest scoring district parks and were perceived to be in need of increased lighting and improved site infrastructure (for example bins and benches). The wildlife value (designated as a Local Nature Reserve) at Sinfin Moor mean that it is important to ensure that an appropriate balance between recreation and wildlife is maintained.

Neighbourhood parks

4.46 The quality of neighbourhood parks, based on the site visits, is summarised in Table 4.3.

Table 4.3 - Quality of neighbourhood parks in Derby

Area	Range of quality scores	Average Quality Score	Highest quality Site (ID)	Lowest Quality Site (ID)
Central	60% to 95%	81%	Arboretum Park (205)	Rowditch Park (2040)
North East	60% to 78%	67%	Priory Park (47)	Gravel Pit Lane Recreation Ground (60)
North West	66% to 88%	72%	Chester Green Park (227)	Mundy Pleasure Ground (308)
South East	40% to 82%	69%	Elvaston Lane Recreation Ground (822)	Pit Close Lane Recreational Ground (2353)
South West	45% to 80%	72%	Clemson's Park (513)	Mackworth Park (443)
Overall	40% to 95%	73%	Arboretum Park (205)	Mackworth Park (443)

4.47 The key issues emerging from Table 4.3 and consultations relating to the quality of neighbourhood parks are as follows:

- views of residents in relation to the quality of neighbourhood parks are positive. 42% of residents indicate that the quality of neighbourhood parks is average and 37% suggest that the quality of this type of open space is good;
- views are consistent across the City. Residents in the North West are particularly positive with the majority of residents (44%) indicating that the quality of neighbourhood parks is good;
- other consultations findings reinforce this positive perception regarding the quality of neighbourhood parks. Respondents to the officers' survey considered the quality of neighbourhood parks to be either good or average and the quality of neighbourhood parks was identified as good at all three drop in sessions;

- the Arboretum was identified as an excellent site by residents at the City Centre and Pear Tree Library drop in sessions, with recent investment at this site commended. However, this site was perceived to suffer from anti-social behaviour;
- although perceptions were largely positive regarding the quality of neighbourhood parks members in the Blagreaves, Mackworth and Derwent wards indicated that the quality of this type of open space is poor. This suggests that the quality of neighbourhood parks varies across the City;
- site assessments support the consultation findings with the quality of neighbourhood parks perceived to be good (average quality score 73%);
- although there is a high average score, the quality of neighbourhood parks is varied, with scores ranging from 40% to 95%. This indicates that whilst there are some high quality neighbourhood parks in Derby there are a number of parks with significant potential for improvement;
- the quality of neighbourhood parks is consistent in three of the five areas. However, in the North East the quality of neighbourhood parks is notably lower than in other areas (average quality score 67%) and in the Central area the quality of neighbourhood parks is higher than other areas at 81%;
- site visits highlight that ancillary accommodation, such as bins and benches, and security and safety are the main areas for improvement at neighbourhood parks in the City. It was specifically noted that there is a lack of lighting at a number of neighbourhood parks; and
- the lack of lighting at neighbourhood parks may correlate to safety concerns identified by residents during consultations. Safety concerns at night, specifically at The Arboretum, were emphasised at the drop in sessions and elected members workshop.

4.48 All consultation findings relating to the quality of parks is found in Appendix E.

Setting quality standards

- 4.49 The recommended local quality standard for city parks, district parks and neighbourhood parks is summarised below. Full justifications and consultation for the local standard is provided within Appendix E.
- 4.50 The quality standard summarises the features that residents consider to be an important determinant of the quality of provision. Although some of the essential and desirable features for all three hierarchies of parks are similar, a higher level and quality of park infrastructure will be expected at the city and district parks. While the basic features will remain the same, it is also expected that city and district parks will offer a wider range of opportunities within them for residents, such as larger play facilities and sports fields.
- 4.51 The target quality score for neighbourhood parks is set at 81%, the score required for formal parks to fall within the top quartile.

Quality Standard (see Appendix E)

City parks

Recommended Quality Standard

Local consultation, national guidance and best practice suggest that the vision for city parks should incorporate:

Essential	Desirable
Clean and litter free	Accessible toilets
Flowers/trees/shrubs – natural or semi natural green space planting, where appropriate	Parking facilities
Well kept grass	Café
Seating	Wardens
Signage	Dog Free areas
Footpaths	Sensory garden

District parks

Recommended Quality Standard

Local consultation, national guidance and best practice suggest that the vision for district parks should incorporate:

Essential	Desirable
Clean and litter free	Accessible toilets
Well kept grass	Café
Flowers/trees/shrubs – natural or semi natural green space planting, where appropriate	Footpaths
Seating	Wardens
Signage	Dog Free areas
	Sensory gardens

Neighbourhood parks

Recommended Quality Standard

Local consultation, national guidance and best practice suggest that the vision for neighbourhood parks should incorporate:

Essential	Desirable
Clean and litter free	Dog walking facilities
Well kept grass	Footpaths
Flowers/trees/shrubs – natural or semi natural green space planting, where appropriate	Wardens
Seating	Dog bins/litter bins

Accessibility

- 4.52 Consultation has shown that access to parks and open spaces and proximity to the home is a key determinant of the level of usage of spaces in Derby. A lack of local access to facilities was the key reason given by those respondents to the household survey who felt that the quantity of parks in the City is insufficient.
- 4.53 The recommended local standard is set in the form of a distance threshold and is derived directly from the findings of the local consultations.

City parks

- 4.54 Of those residents who currently use city parks, 47% drive and 46% walk. Travel times exhibited by current users are range from less than 5 minutes (19%), 10 to 14 minutes (24%) and 15 – 19 minutes (19%). These findings suggest that residents are prepared to travel outside of their local area to access a city park.
- 4.55 Similar to the findings portrayed by current users, 49% of respondents would expect to drive to a city park and 36% would expect to walk to access this type of open space. However, a variation of opinion is evident across the City. In the Central and North West areas the majority (58% and 70% respectively) of residents prefer to walk to access a City Park. However, in the North East (55%), South West (64%) and South East (64%), residents expect to drive to a city park. These views are influenced by the location of the existing parks, as in general, residents who are more satisfied live in closer proximity to existing parks.
- 4.56 The proportion of residents who expect to travel on the bus to access city parks is higher than any other type of open space further highlighting the expectation of residents to travel further to access a city park. While these expectations demonstrate that some residents are willing to travel on public transport to reach the larger parks, it is clear from current travel patterns that the majority of users will travel on foot or by car.

- 4.57 Site assessments indicate that access to city parks is excellent. Sites were considered to be easily accessible, with a number of entrances, and well signposted, both to and within the parks. The A32/A52 does however present a barrier to Markeaton Park for some residents, particularly those who travel on foot.

District parks

- 4.58 65% of current users of district parks walk to access a site and only 20% of users currently drive. Travel times experienced by current users are split between 5 to 9 minutes (29%), 10 to 14 minutes (25%) and less than 5 minutes (23%). This suggests that residents do not travel as far to reach district parks as they do to city parks, highlighting the more local nature of district parks.
- 4.59 Consistent with the travel patterns identified by current users, 47% of users would expect to walk to a district park. 39% of residents would prefer to drive to access this type of open space. This shows that there is a difference in opinion, which may again be influenced by the location of these sites.
- 4.60 Findings within the north and central areas mirror the city wide results. However, in the South West and South East, the majority of respondents would expect to drive to access a district park (53% and 52% respectively). This reflects the location of existing district parks in Derby, particularly in the South East, where no sites are located.
- 4.61 Site assessments indicate that access to district parks is generally good. It was identified that some sites are located along bus and cycle routes making them easily accessible for a large number of residents.

Neighbourhood parks

- 4.62 Current users walk to access a neighbourhood park (96%). The most common travel times experienced by users are 5 to 9 minutes (37%) and less than 5 minutes (31%). This suggests that residents expect neighbourhood parks to be in close proximity to their home. These parks are the most local type of park.
- 4.63 Consistent with the travel patterns portrayed by current users, respondents to the household survey expect to walk to a neighbourhood park (83%). Findings within the five geographical areas are consistent with the city wide result and emphasise the importance of providing local access to these facilities.
- 4.64 Site visits identify that access to neighbourhood parks is generally average. Although neighbourhood parks serve a local catchment many sites were highlighted as being in close proximity to bus and cycle routes. However, the need for increased infrastructure, in particular signage, was identified. This included such sites as Normanton Park, Mackworth Park and Sunnydale Park.

Setting accessibility standards

- 4.65 The recommended local accessibility standard for city parks, district parks and neighbourhood parks is summarised overleaf. Full justification for the local standard is provided within Appendix E.

Accessibility Standard (see Appendix E)

City parks

Recommended Accessibility Standard

10 minute drive time / Public transport (approximately 8000 metres)

Justification

Current and expected travel patterns highlighted a difference in the mode of transport used to access city parks. Of those residents that currently use city parks, 47% drive and 46% walk. Preferred travel patterns indicate that 49% of respondents would expect to drive to a city park and 36% would expect to walk to access this type of open space. These differences in opinion are reflected in the areas.

According to the household survey, of those who prefer to walk to a city park the average expected travel time is 19 minutes. The most common response (mode) is lower at just 10 minutes.

The average travel time portrayed by residents who prefer to drive to a city park is 17 minutes. The modal response is slightly lower at 15 minutes. Variations in the average travel time and most common response are evident from responses in the areas.

The recommended local accessibility standard has been set at 10 minute drive time. This reflects the expectations of residents to travel outside of their locality to access a city park and the more strategic nature of this hierarchy of park, with city parks attracting a large number of visitors. This standard is less challenging than the one outlined in the local plan (5000m).

District parks

Recommended Accessibility Standard

15 minute walk time (1200 metres)

Justification

Nearly two thirds of current users walk to access a district park with a travel time of up to 15 minutes most commonly experienced (52%). Similar to travel mode portrayed by current users, 47% of residents would expect to walk to a district park. 39% of residents would expect to drive to a district park.

Household survey findings indicate that the most common expected travel time is 10 minutes. The average travel time is higher at 16 minutes. The modal response is consistent in four of the five areas and average travel times range from 13 minutes to 19 minutes.

The local accessibility standard for district parks has been set at a 15 minute walk time. This reflects the expectations of residents and highlights the more localised nature of this type of park. This standard is slightly more challenging than the existing standard outlined in the Local Plan (1200 metres).

Neighbourhood parks

Recommended Accessibility Standard

10 minute walk time (480 metres)

Justification

Current (96%) and expected (83%) travel patterns highlight a clear preference for travelling on foot to access a neighbourhood park.

The majority of current users (68%) travel up to 10 minutes when accessing a neighbourhood park. The average expected travel time is 10 minutes and the most common response is lower at just 5 minutes. The most common response in three of the five areas is 10 minutes.

Based on consultation, the local accessibility standard has been set at a 10 minute walk time. This standard reflects the expectation of residents to find neighbourhood parks in close proximity to their home. The recommended accessibility standard relates closely to that outlined in the Local Plan (400 metres).

Applying provision standards

- 4.66 The application of the recommended quality, quantity and accessibility standards provides an understanding of the existing distribution of parks.
- 4.67 Tables 4.4 and 4.5 summarises the application of the quantity standards by area. Given that there is no quantity standard for city parks, it is not appropriate to apply a standard.
- 4.68 Surpluses and deficiencies are calculated by applying the recommended standard to the existing and projected populations. Calculations on future provision against the local standard assume that no further parks will be provided. The quantity standards should be used to guide the amount of provision required, however an accessibility led approach should be taken in order to determine where new parks should be provided.
- 4.69 Given the uncertainties that still exist around the levels and location of new housing developments, it has been assumed for the purposes of projecting open space need that population will grow uniformly across the city. The figures used consider only the impact of population growth within the city boundaries.
- 4.70 It is however acknowledged that plans to provide new housing on the edge of the city boundary within the South Derbyshire and Amber Valley Districts will also impact on demand for open space, as it is likely that these residents will travel into the city to use open spaces and sports facilities. The lack of clarity on the likely scale and location of development means that this impact cannot be quantified at the current time, but should be taken into account as part of the planning process for any new development.

Table 4.4 – Application of the quantity standard for district parks

Settlement hierarchy	Current (2010) shortfall/surplus when measured against local standard (hectares)	Future (2026) shortfall/surplus when measured against local standard (hectares)
Central	-20.97	-25.88
North East	-2.41	-8.88
North West	18.53	13.82
South East	24.29	17.69
South West	-20.30	-25.05
Overall	-0.85	-28.29

4.71 Table 4.4 indicates the following:

- there is a currently a minor shortfall of district parks across the City (0.85 hectares). However, based on future population projections there will be a significant shortfall of district parks (over 28 hectares);
- only within the North West and South East areas is the provision of district parks sufficient to meet current demand;
- no district parks are located in the Central and South West areas and therefore not surprisingly the greatest shortfalls are located in these two areas; and
- future expected shortfalls (28 hectares) indicate that new provision will be required by 2026.

Table 4.5 – Application of the quantity standard for neighbourhood parks

Settlement hierarchy	Current (2010) shortfall/surplus when measured against local standard (hectares)	Future (2026) shortfall/surplus when measured against local standard (hectares)
Central	5.45	-0.65
North East	-14.15	-22.21
North West	-13.18	-19.05
South East	1.66	-6.57
South West	18.72	12.81
Overall	-1.51	-35.67

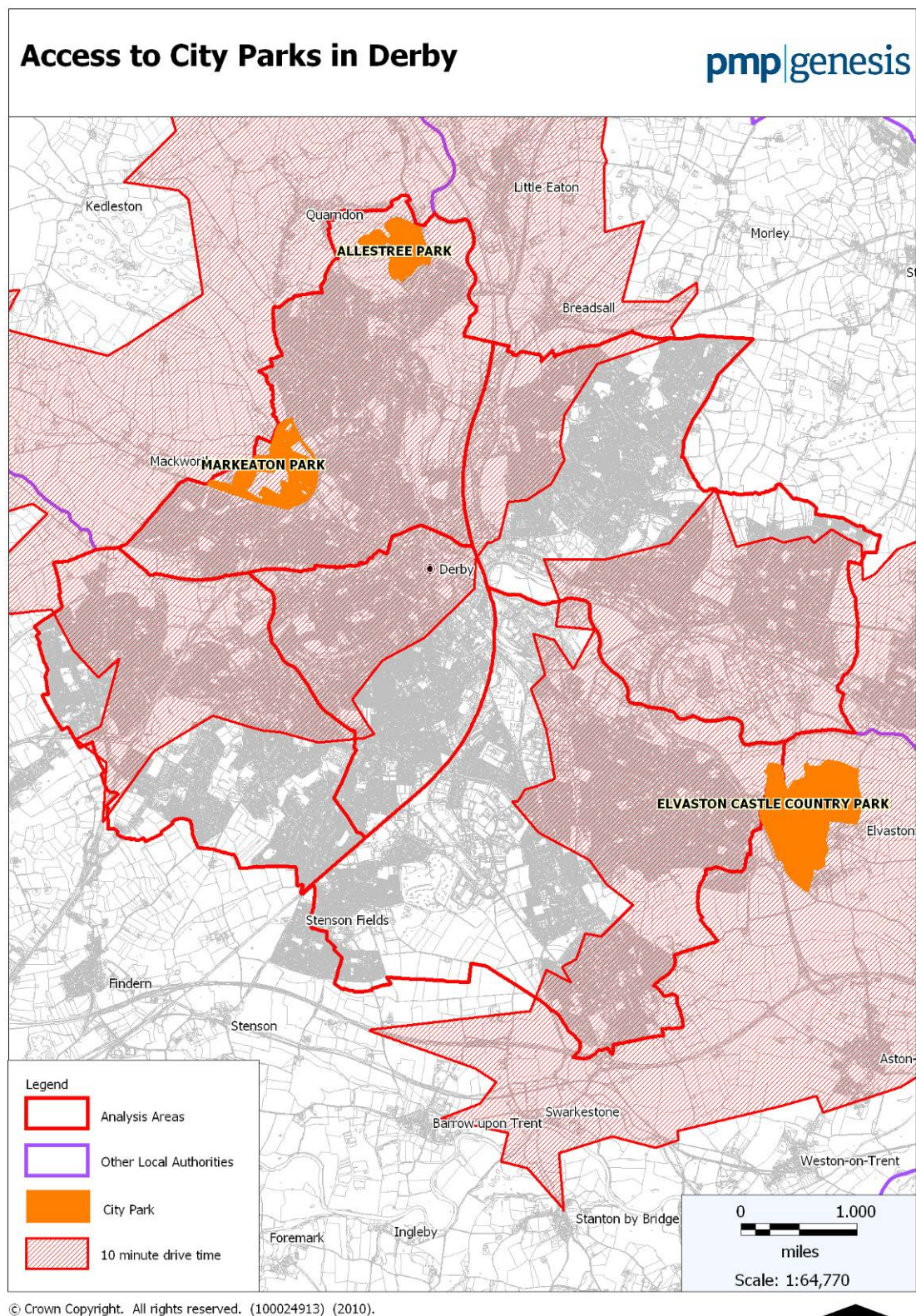
4.72 Table 4.5 indicates the following:

- the current supply of neighbourhood parks is insufficient to meet demand with a current shortfall of 1.51 hectares. Future population increases indicate that this shortfall is expected to increase significantly to over 35 hectares by 2026. This suggests that new provision will be required. The provision of district parks negates the need for additional neighbourhood parks where the higher order facility is located within the recommended neighbourhood park catchment. This will be returned to later in this section;
- only within the South West area is the provision of neighbourhood parks sufficient to meet demand. There is a shortfall of neighbourhood parks in all remaining areas; and
- the greatest current and future shortfall of neighbourhood parks is found in the North East area.

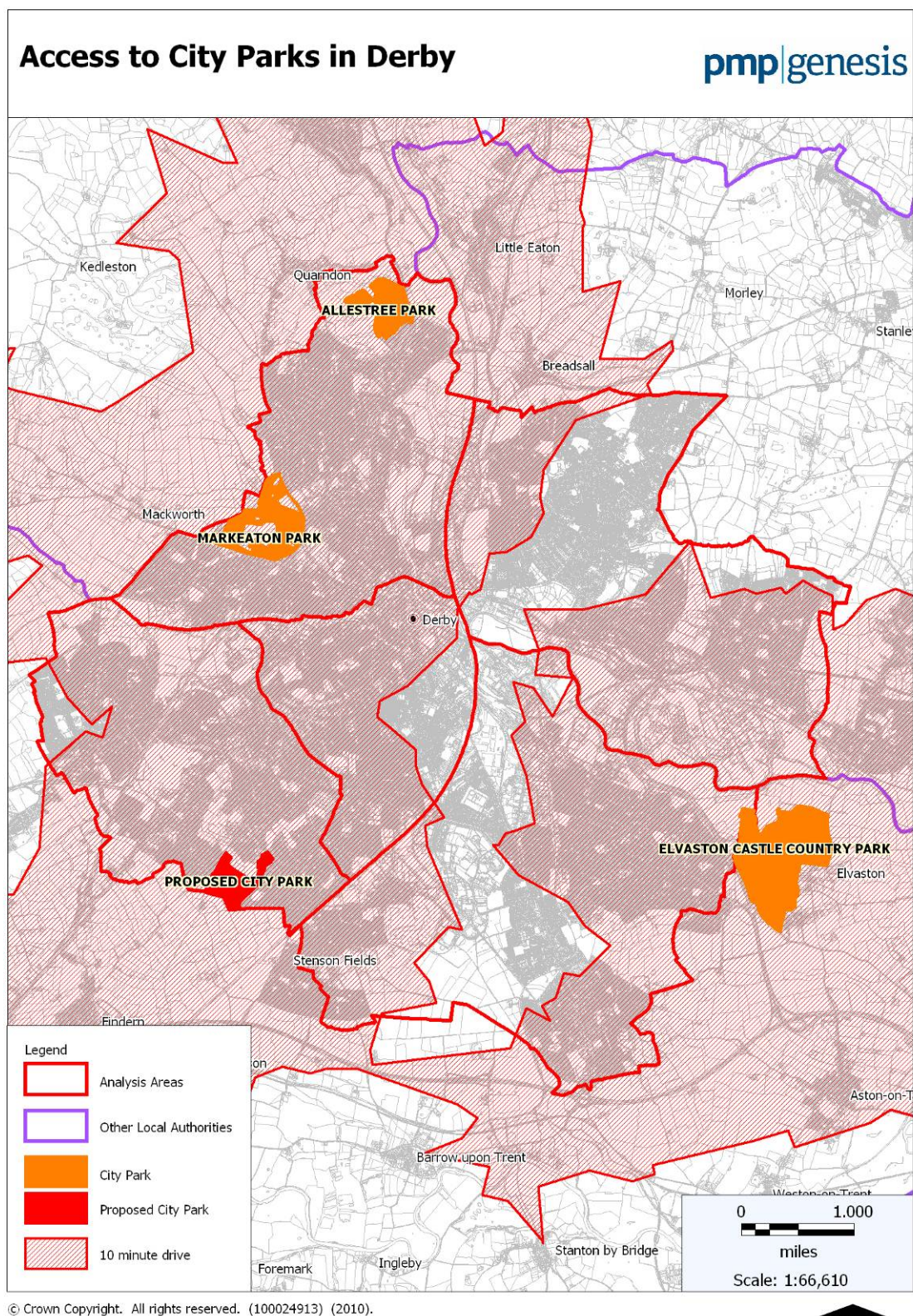
Accessibility

- 4.73 The application of the accessibility standard for city parks, district parks and neighbourhood parks is outlined in Maps 4.1– 4.3 overleaf. Map 4.2 illustrates the proposed city park outlined in Policy L4 (1) of the *City of Derby Local Plan Review (2006)*. This provides an indication as to the impact the proposed city park will have in Derby should the vision for a new facility be realised.
- 4.74 In addition to considering parks within Derby, the following maps also consider the location of parks outside of the City boundary in close proximity to Derby. Although these sites are outside of the City, they do provide access for residents on the edge of the City boundary and negate the need for additional provision within the city boundaries.

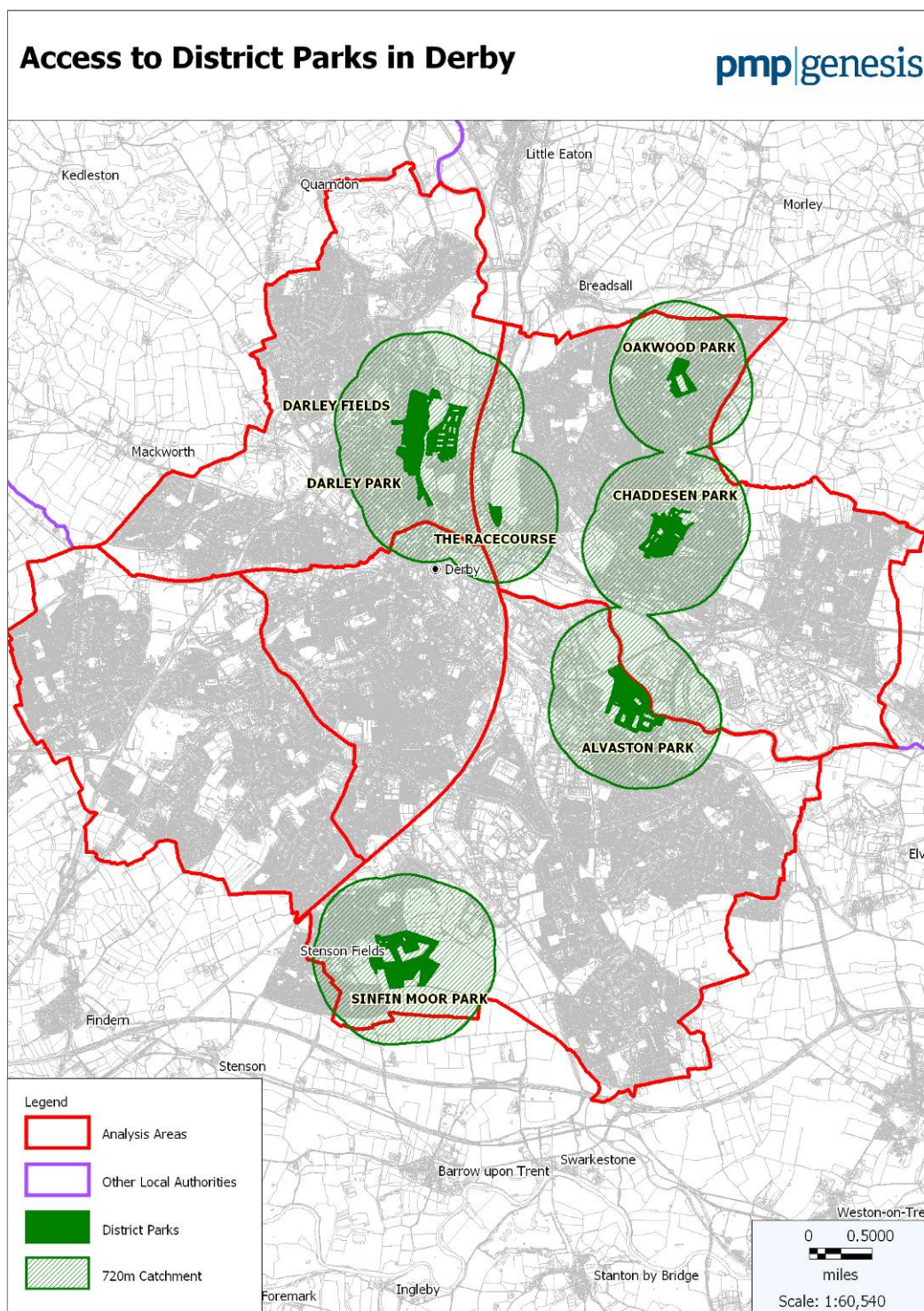
Map 4.1 – City parks in Derby



Map 4.2 – City parks in Derby including the proposed city park

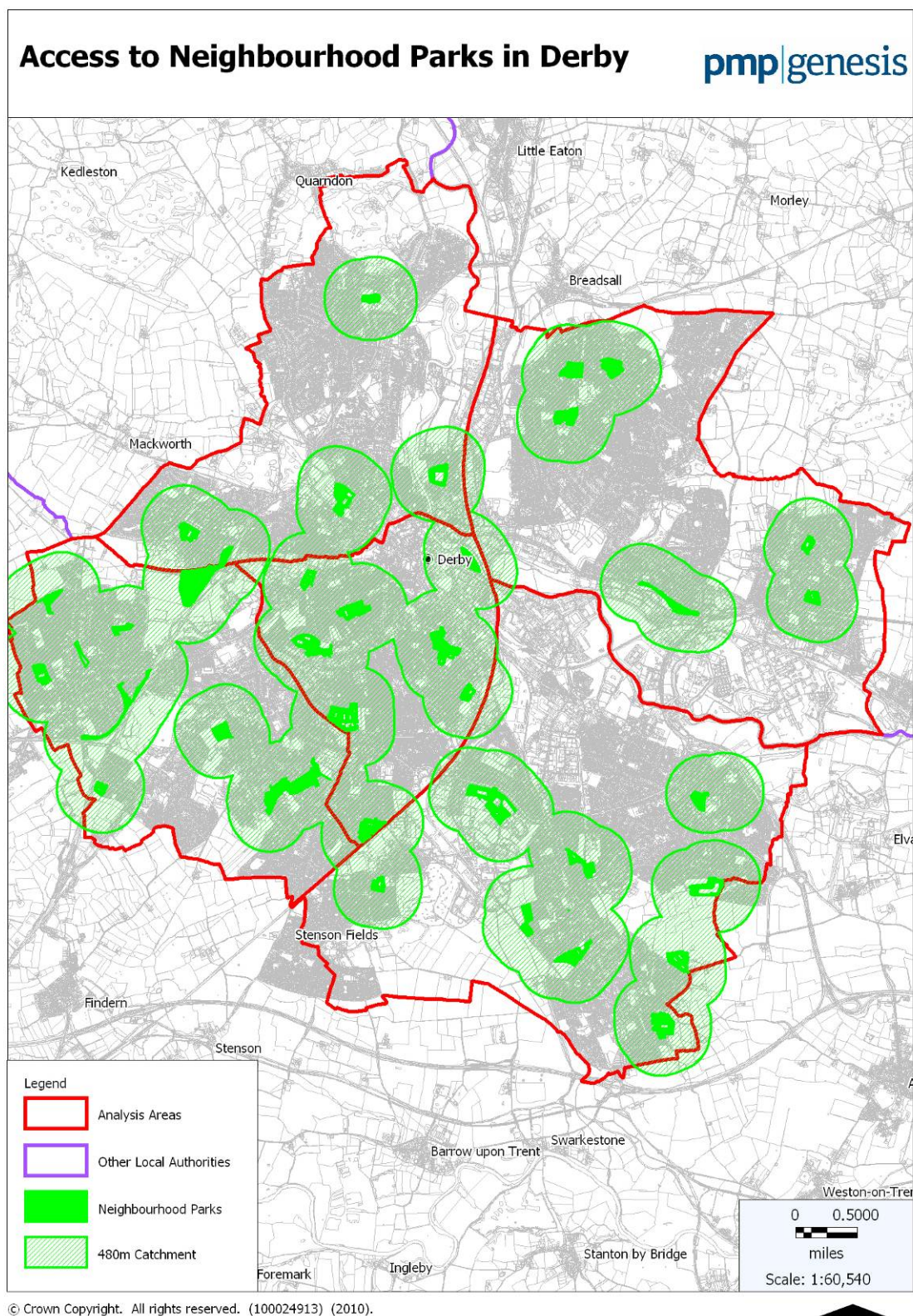


Map 4.3 – District parks in Derby



© Crown Copyright. All rights reserved. (100024913) (2010).

Map 4.4 – Neighbourhood parks in Derby



4.75 Maps 4.1 – 4.4 indicate the following:

- city parks within Derby are located in close proximity to the authority boundary which means that a large number of residents are unable to access either of the Derby City Council facilities within a 10 minute drive time. Key areas of deficiency are evident in Littleover, Sinfyn and Oakwood;
- although residents to the east of Markeaton Park appear to be able to access this site, in reality, the A38 and A52 roads act as a barrier to access, particularly for those who wish to travel on foot;
- when considering the proposed city park near Littleover large areas of deficiency in the south of the City are alleviated. Elvaston Park, located just outside the City boundary to the east, plays a vital role in providing residents to the east of the City, particularly in Alvaston, with access to a city park;
- district parks are predominantly located in the north east of the City. Large areas of deficiency are evident across all areas of the City, particularly in the south of Derby; and
- the majority of neighbourhood parks are located in the south of Derby. Key areas of deficiency are located in Alvaston and Chaddesden.

4.76 Whilst applying the standards for each hierarchy of park provides an indication as to the location of existing provision it is important to consider parks in the context of one another. As a higher order facility where residents are located within the catchment of a city park there is no requirement for a district park or neighbourhood park. Similarly, where residents are within the catchment of a district park, this negates the need for a neighbourhood park.

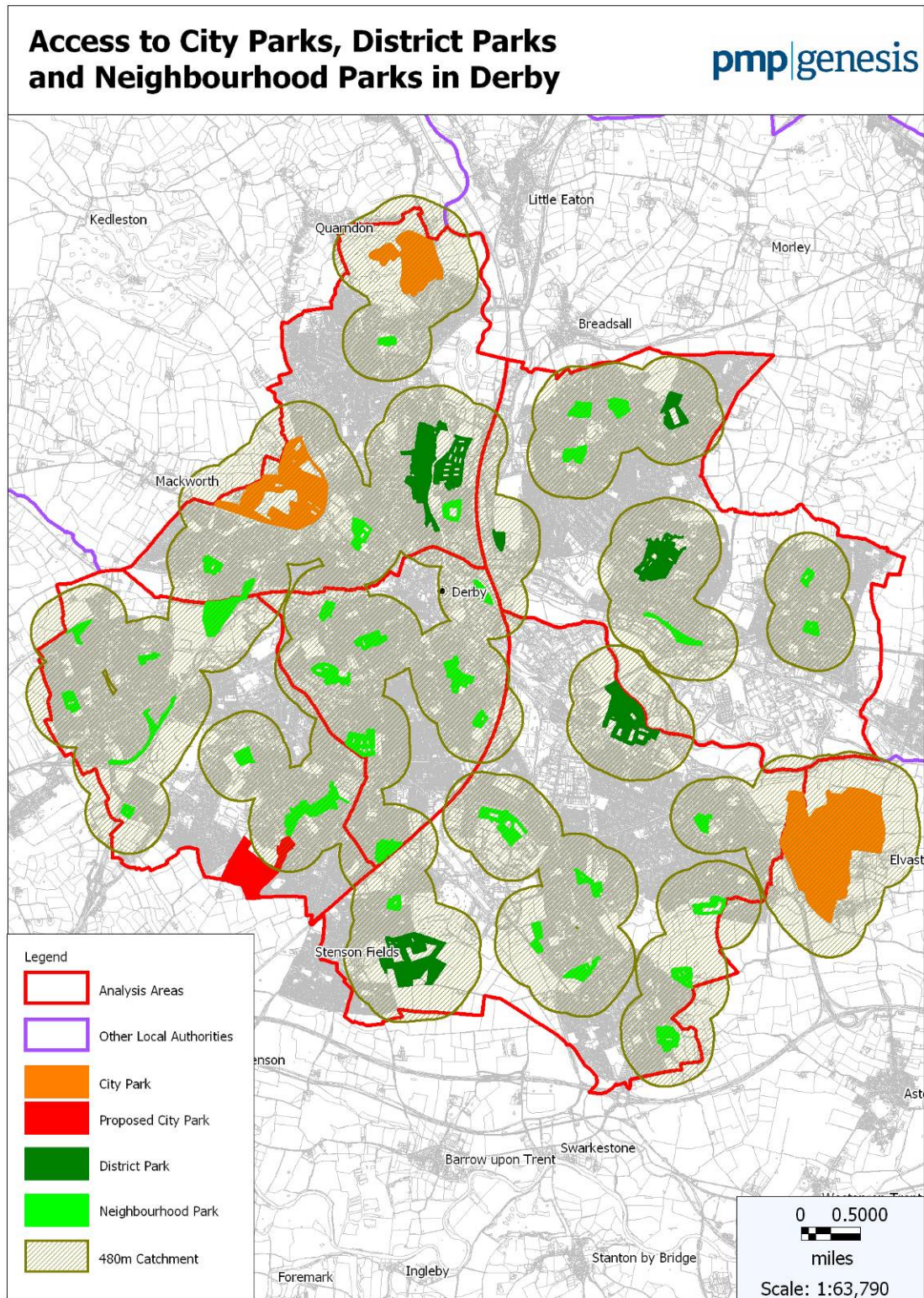
4.77 Map 4.5 overleaf considers the provision of all three parks hierarchies in the context of one another. This enables the identification of areas where residents are outside the catchment of a park.

4.78 Amenity green space provides more localised and informal play opportunities for residents and these sites are particularly valuable for children and young people. The presence of amenity green space in areas deficient of parks provides an opportunity to formalise these spaces to better meet the needs of local residents.

4.79 Where parks are provided within a 5 minute catchment (the recommended distance threshold for amenity green space as set in Section 6) they may negate the need for further provision of amenity green space (as a higher order facility they provide a greater range of facilities) as they fulfil similar roles. This is discussed in Section 6.

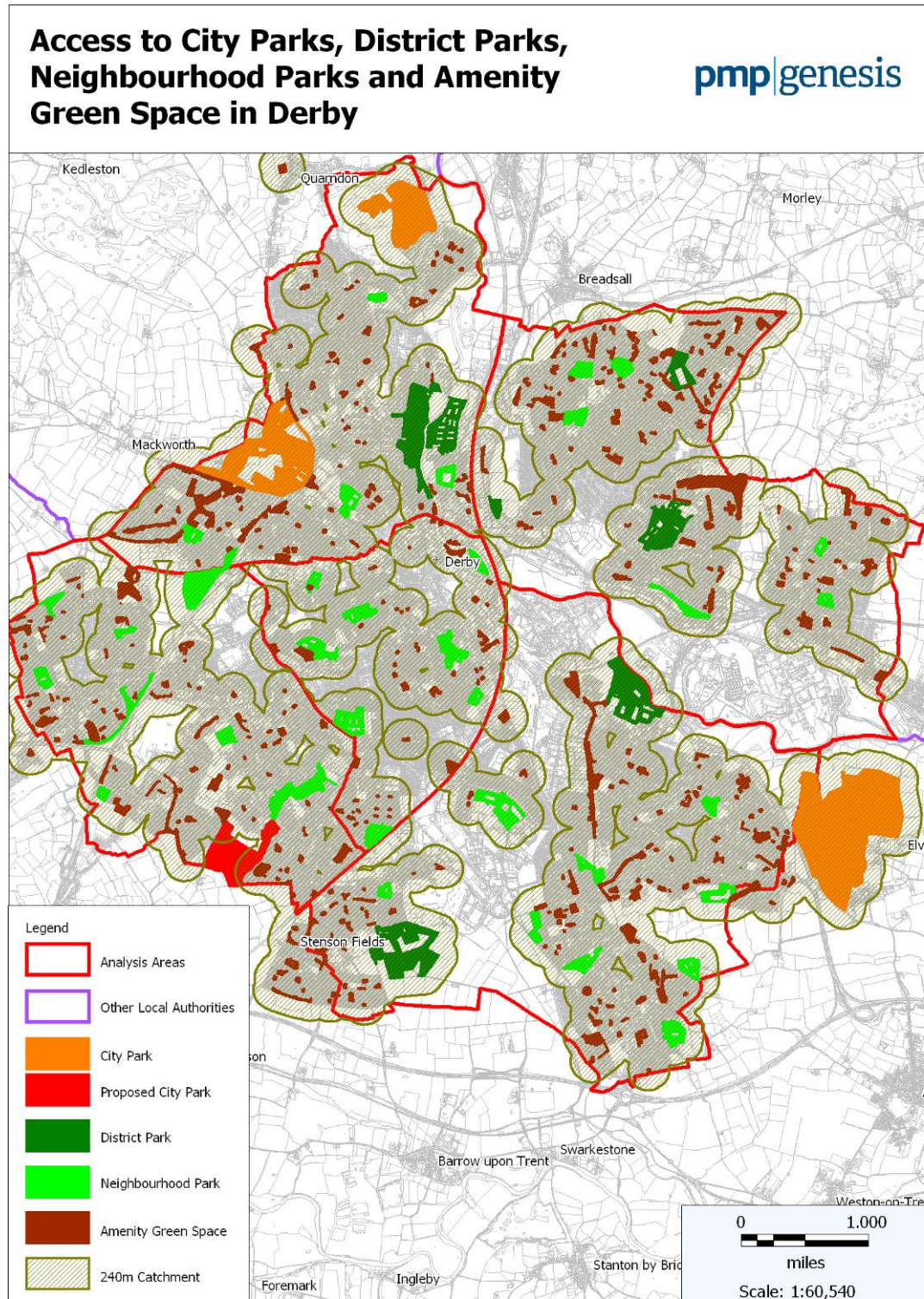
4.80 Map 4.6 (page 61) considers the provision of parks in the context of amenity green space.

Map 4.5 – City parks, district parks and neighbourhood parks in Derby



© Crown Copyright. All rights reserved. (100024913) (2010).

Map 4.6 - City parks, district parks, neighbourhood parks and amenity green space in Derby

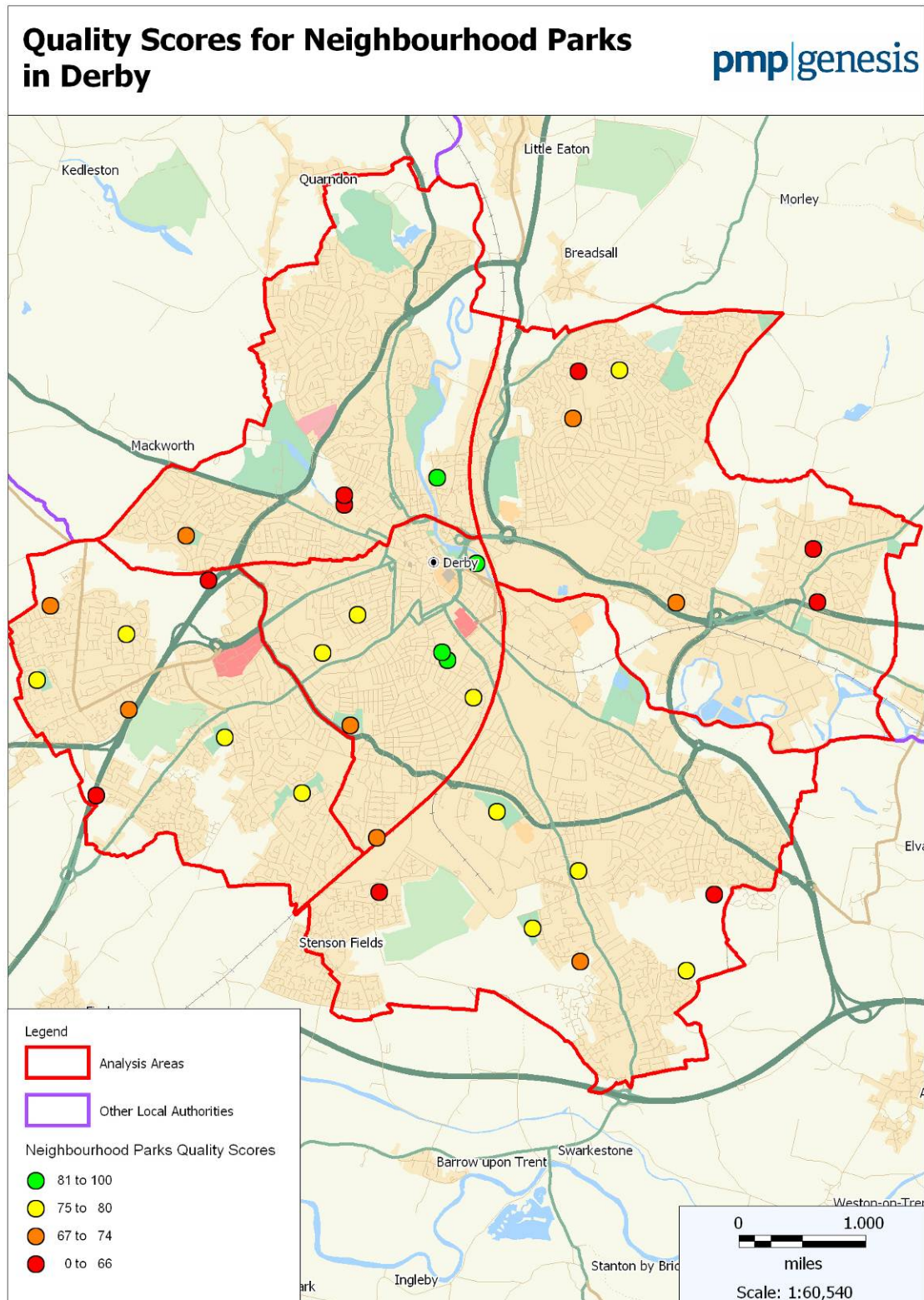


- 4.81 Map 4.5 (page 60) indicates that when amalgamating the provision all three hierarchies of parks the majority of residents have access to at least one type of park within a 10 minute walk time (480 metres). Although there are some other deficiencies across the city, these are largely non residential areas and so are of limited significance. This suggests that the overall quantity of neighbourhood parks in Derby is almost sufficient. The only key areas of deficiency are evident in the west of Alvaston and west of Chaddesden.
- 4.82 Map 4.6 indicates that nearly all residents have access to a park or amenity green space within a 5 minute walk time. This means that residents in Derby have good access to informal open space within close proximity to their home. Reflecting Map 4.5, the only deficiencies evident are largely non-residential areas.

Quality

- 4.83 The quality scores for neighbourhood parks across the City, based on site assessments, have been divided into quartiles. Map 4.7 overleaf therefore illustrates the quality of neighbourhood parks in Derby, providing a visual analysis of the distribution of low quality and high quality sites.
- 4.84 Map 4.7, overleaf, also demonstrates that there are no clear clusters of poor quality neighbourhood parks in Derby. However, the highest quality sites are located in close proximity to the Central area and the lowest quality sites are located in the North East.
- 4.85 Site specific priorities for qualitative improvement will be discussed later in this section.

Map 4.7 – Quality of neighbourhood parks in Derby



Priorities for Future Delivery

- 4.86 This section considers the city wide issues that need to be addressed. These issues arise through the application of the local quality, quantity and accessibility standards. Consideration is also given to issues in specific settlements where appropriate.
- 4.87 In line with the principals of PPG17, the priorities are set out under the headings of:
- Quality enhancements
 - Sustainability of parks
 - Environmental role of parks
 - Protection of existing provision
 - Disposal
 - New provision
 - Redesignation
 - Enhancing access routes

Quality Enhancements

- 4.88 While the quality of parks is perceived positively in the City, consultation, as well as the application of local standards, indicates that in most areas of the City the priority remains the ongoing maintenance and improvement of this type of open space.
- 4.89 The local quality standards indicate that effective maintenance and a range of flowers, trees and shrubs are essential features of parks. Seating is also perceived to be an essential feature of parks and larger ancillary facilities, such as toilets and cafés were considered to be desirable at city parks and district parks to meet the needs of residents and visitors travelling to access these types of parks. Ensuring that sites are well maintained, contain a range of vegetation and site infrastructure will be important if residents are to remain satisfied with the quality of provision.
- 4.90 The Arboretum is the only park in Derby that has achieved a Green Flag award. This site is an example of good practice and should be used as a benchmark for all other parks in Derby. The Council should seek further Green Flag awards at other parks in the City.
- 4.91 Parks achieving lower quality scores, particularly those serving large centres of population, should be prioritised for improvement. It will also be essential to ensure that the quality of the flagship facilities (such as Markeaton Park) continues to be maintained and improved as these provide a destination for visitors as well local residents.
- 4.92 In addition to providing high quality facilities, in order to attract residents to parks and to encourage increased usage, events and activities may also be a key part of any parks management strategy.

PG1	Continue to develop and enhance the quality of existing parks in the City. Drive a structured programme of improvements with clearly defined outputs to create an overall network of high quality, sustainable parks. This may include the production of parks management plans.
------------	---

- 4.93 The key quality issues for neighbourhood parks (which serve a more localised catchment) within the areas, where relevant, are outlined below.

Central

- 4.94 Site assessments indicate that Bass' Recreational Ground (85%), The Arboretum (95%) and Rykneld Recreation Ground (82%) achieved quality scores that exceed the target quality score of 81%. These sites were perceived to be well maintained, well lit and contain a number of bins and benches. The Arboretum is the highest quality neighbourhood park in Derby.
- 4.95 Only Rowditch Park (60%) achieved a quality score below 74% indicating that the quality of neighbourhood parks in the Central area is good. Rowditch Park was identified as containing litter and graffiti and being in need for more bins and benches.

North East

- 4.96 No neighbourhood parks achieved a quality score in line with the target quality score of 81%. However, Priory Park (78%) is a high quality site in the North East area.
- 4.97 Three sites achieved quality scores below 66% highlighting the need for significant qualitative improvement. These sites are identified in Table 4.6 below.

Table 4.6 – Lower scoring neighbourhood parks in the North East Area

Site name	Quality score	Site assessment comments
High View Park	66%	The need for increased ancillary accommodation, particularly bins and benches was identified.
Gravel Pit Lane Recreation Ground	60%	This site was perceived to be in need of increased maintenance.
Brunswood Close Recreational Ground	60%	Vandalism and graffiti was found on the play area and pavilion at this site. The need for more bins and benches was highlighted.

North West

- 4.98 Chester Green Park (88%) is the second highest quality neighbourhood park in Derby and achieved a quality score that exceeds the target of 81%. The general cleanliness and maintenance of this site was specifically commended during site assessments.

- 4.99 Markeaton Recreation Ground and Mundy Pleasure Ground (68% and 66% respectively) achieved quality scores of 68% or below and are in need of enhancement. The need for enhanced maintenance and increased infrastructure at Markeaton Recreation Ground was highlighted. Mundy Pleasure Ground was identified as being in need of more bins and benches and improved vegetation.

South East

- 4.100 Elvaston Lane Recreational Ground (82%) is the only neighbourhood park in the South East area that achieved a quality score that exceeds the target of 81%. Osmaston Park, Boulton Lane Recreation Ground and Chellaston Park (all 80%) are also high quality neighbourhood parks located in the South East. These sites were perceived to be well maintained and contain a good amount of ancillary accommodation.
- 4.101 Pit Close Lane Recreational Ground (40%) and Sinfin Recreation Ground (52%) are two sites in the area that achieved quality scores of 66% or below, highlighting the need for significant qualitative improvements. Pit Close Recreational Ground is the lowest quality neighbourhood park in Derby. Specifically, a lack of vegetation, such as flowers and trees and bins and benches were noted. Maintenance at Sinfin Recreation Ground was identified as poor, with lots of litter found on the site and equipment perceived to be in poor condition. It will be particularly important, given the potential wildlife and conservation value of this site, that a balance between recreation and conservation is maintained.

South West

- 4.102 No sites in the South West area achieved a quality score in line with the target of 81%. Clemsons Park, Bramble Brook Open Space, Sunnysdale Park and Vicarage Park (all 80%) are however high quality neighbourhood parks in the South West. These sites were identified as being well maintained and containing lots of ancillary accommodation such as bins and benches.
- 4.103 Haven Baulk Lane Recreation Ground (65%) and Mackworth Park (45%) are the lowest scoring sites in the South West and Mackworth Park is the second lowest quality neighbourhood park in Derby. No specific quality issues were identified at Haven Baulk Lane Recreation Ground, however this site is in need of enhanced maintenance, increased provision of bins and benches and an improved range of vegetation. Maintenance at Mackworth Park was identified as poor, with many areas of the site overgrown and ancillary accommodation was rated as very poor with there being no footpaths at this site.

Sustainability of Parks

- 4.104 The long term sustainability of parks is a key issue in Derby. Making best use of the available assets at parks and incorporating sustainable management practices is essential in ensuring the future of this type of open space and ensuring that improvements to these sites can continue.
- 4.105 Friends Groups can play an important role in ensuring the long term sustainability of parks by supporting the Council with the maintenance of sites, developing the parks and organising events and activities. Involving the community in the management of parks and open spaces reduces the pressure on Council resources and can be instrumental in generating a culture of respect and encouraging residents to value the local resources. This will have a knock on effect on the quality of open spaces.

- 4.106 There are a number of active friends groups in Derby at Allestree Park, Alvaston Park, The Arboretum and Darley open space's. These groups are prominently associated with parks in Derby and undertake a number of responsibilities. For example, Friends of Allestree Park have undertaken a number of activities including cleaning debris from the lake, restoring the main footpath through Big Wood and installing a flight of stairs at Allestree Park.
- 4.107 The Council actively supports the development of established friends groups within Derby and encourages the creation of additional groups at other parks in the City. This should continue and will contribute significantly to the long term sustainability of parks and ensure that the identified recent improvements can continue.

PG2	Work with providers of open space in the City to initiate the creation of friends groups at parks and support and assist existing friends groups established at parks in Derby in their growth and empowerment.
------------	--

- 4.108 A large number of events are held at parks in the City and this was identified as a key strength during consultations. Over 200 events are held in parks across the City and not only does this encourage community involvement but it provides economic benefits by bringing money into Derby. This therefore contributes to the long term sustainability of parks and should be encouraged.

PG3	Continue to support and develop events held at parks in Derby. Work with providers and friends groups to provide a range of activities events and parks in the City.
------------	---

Environmental Role of Parks

- 4.109 As well as functioning as a recreational resource, parks have an important environmental role within the City. Parks provide people with the opportunity to experience the natural environment and they play an important role in protecting and enhancing biodiversity and mitigating climate change. For example, parks can contribute to urban cooling and absorb carbon and other pollutants that are in the atmosphere.
- 4.110 There are a number of parks in Derby that provide both a recreational and natural resource for local residents and visitors. These sites include:
- Darley Park – this park contains a cricket pitch, play area and café in addition to a wildflower meadow and a tree trail;
 - Oakwood Park – in addition to a variety of recreational facilities (play area, sports pitches and a MUGA) this park has designated areas set aside to encourage wildflower and trees; and
 - Sinfin Moor – the majority of this site is open grassland, providing recreational facilities such as football pitches, and approximately one third of this site consists of unmanaged natural open space. This site is classified as a Local Nature Reserve (LNR).
- 4.111 The Council is already incorporating sustainable management practices at parks in the City, such as the development of management plans at Sunnysdale Park, Allestree Park and Sinfin Moor Park, and this should be maintained and encouraged at other parks in Derby to promote biodiversity and

create a healthy ecosystem at parks. The creation of management plans at parks may be important in the achievement of this aim.

PG4	Continue to work with providers of open space in the City to maintain and encourage sustainable management techniques to promote biodiversity and create a healthy ecosystem in parks in Derby.
------------	--

Protection of Existing Provision

- 4.112 The City of *Derby Local Plan Review (2006)* emphasises the importance of protecting parks from development. Policy E22 states that development which harms the character or setting of registered historic parks and gardens will not be permitted. The policy indicates that the Council will seek to retain, restore, maintain and encourage use of historic parks and gardens.
- 4.113 The value of parks in Derby was emphasised throughout consultation. Parks are the most frequently used types of open spaces in the City. This type of open space was perceived to provide a focal point for the community and encourage community involvement and the recreational and environmental value of parks was identified as one of the main reasons why this type of open space is used so frequently.
- 4.114 Parks are well distributed across the City and the majority of sites, particularly in the South East of Derby, serve unique catchments. This means that parks are a particularly valuable local resource for residents.
- 4.115 Although parks are a valuable local resource for residents, larger parks, such as Markeaton Park and Allestree Park are strategic sites in Derby that attract a wide range of visitors to the City. Residents travel across Derby to access these city parks and they are regarded as one of the most valued natural assets in Derby.
- 4.116 In consideration of the importance of parks and the value of sites from both a recreational and environmental perspective, these sites should be protected from residential development. The protection of parks will also be important in adapting to the impact of climate change, particularly in the dense urban environments of some parts of the city and in the areas specifically designated as being at high risk from flooding.

PG5	In light of the importance of parks, seek to protect all existing sites that serve unique catchments from development through the Local Development Framework. Parks (or parts of parks) should only be lost where it can be proven that there is no demand for the facility, or that improvements to another site will be of greater value to residents in the immediate catchment of the park to be lost.
------------	--

Disposal of Facilities

- 4.117 There are no recommendations for the disposal of existing parks. However, as previously highlighted in recommendation PG4 there is potential to expand the functionality of these sites, such as incorporating natural open space within parks. This will be returned to later in the section.

New provision

- 4.118 Application of the quantity standard has indicated that overall there is currently a small shortfall of both district and neighbourhood parks. Although there is only a small overall shortfall, localised deficiencies are evident in some areas. To provide a clear indication as to whether and where new provision is required it is essential to take accessibility led approach.
- 4.119 Accessibility mapping reveals that there is a good distribution of park across the City with nearly all residents having access to at least one type of park within a 10 minute walk time. However, although access to parks is good, future population projections indicate that the shortfall of district and neighbourhood parks is expected to increase significantly. This means that the capacity of existing parks may be insufficient to accommodate future population growth and new provision will therefore be required. The provision of parks should therefore be considered as part of new development. This will be particularly important where new development extends the boundaries of existing developments, and residents will be outside of the recommended local catchment for a neighbourhood park.

PG6	Ensure that new housing developments contribute towards (or provide on site where they are large enough to be reasonably expected to do so) the provision of new, or extension of existing, parks where possible and appropriate. Where the supply of parks in the surrounding area is sufficient, policy should ensure that contributions are required for qualitative improvements.
------------	--

- 4.120 The key priorities for new provision of district parks and neighbourhood parks are set out by area in the sub-sections that follow overleaf.

Central Area

- 4.121 No city parks or district parks are located in the Central area. This means that there is a lack of larger parks in this area of the City.
- 4.122 The greatest shortfall of district parks is found in the Central area, with there being a shortfall of 20.97 hectares. In contrast, the current provision of neighbourhood parks is sufficient to meet demand. However, based on future population increases, there will be a minor expected shortfall of 0.65 hectares. New developments in this part of the city are likely to be of higher density than in other areas (and potentially apartments without gardens) and therefore localised access to facilities is particularly important.
- 4.123 Accessibility mapping indicates that there is a good distribution of parks in the Central area which means that the majority of residents have access to a neighbourhood park within a 10 minute walk time (480 metres). Although the majority of residents have access to a neighbourhood park key areas of deficiency are located to the east of Normanton Park and in Derby city centre (Figures 4.1 and 4.2 overleaf).

Figure 4.1 – Deficiencies to the east of Normanton Park

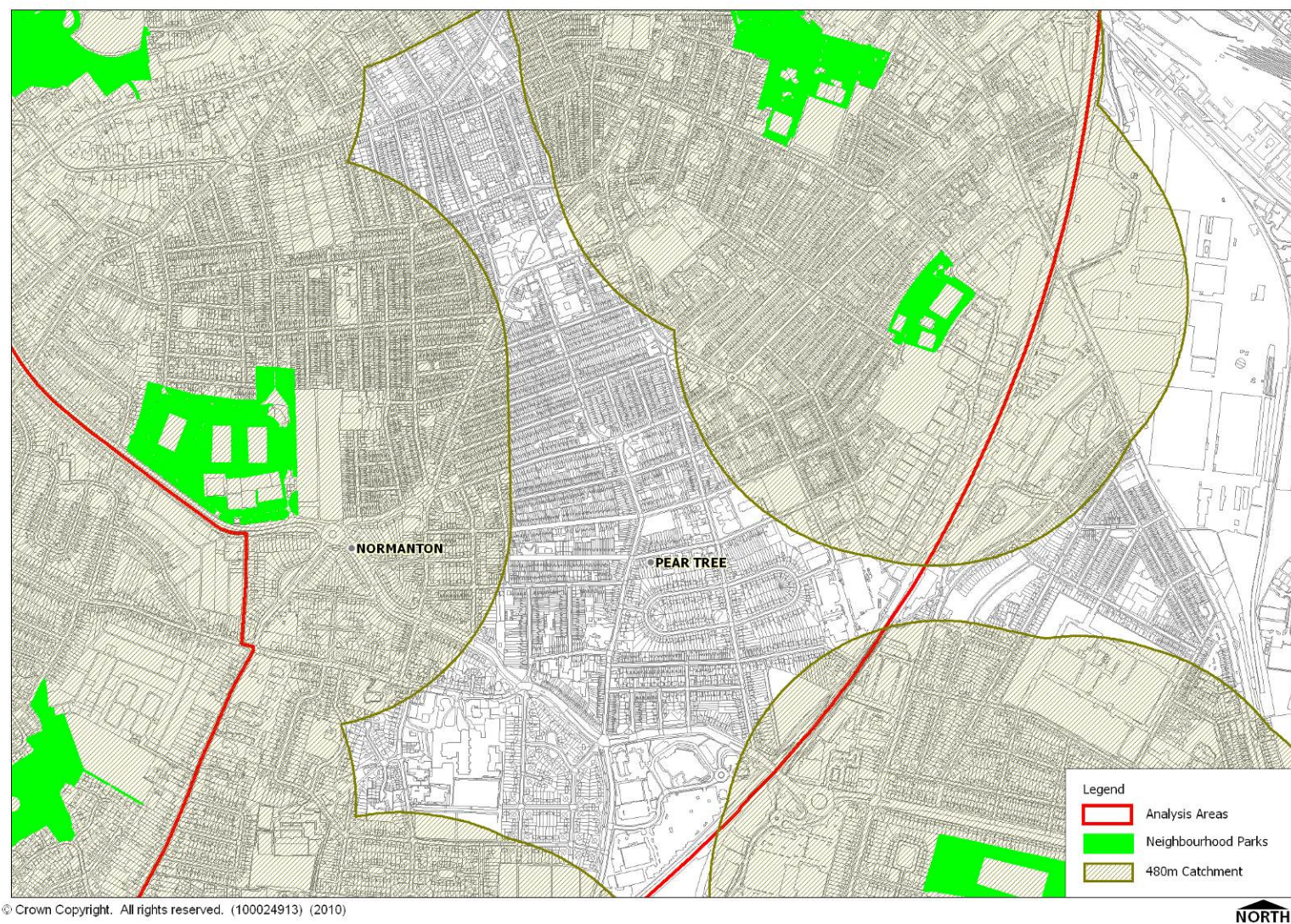
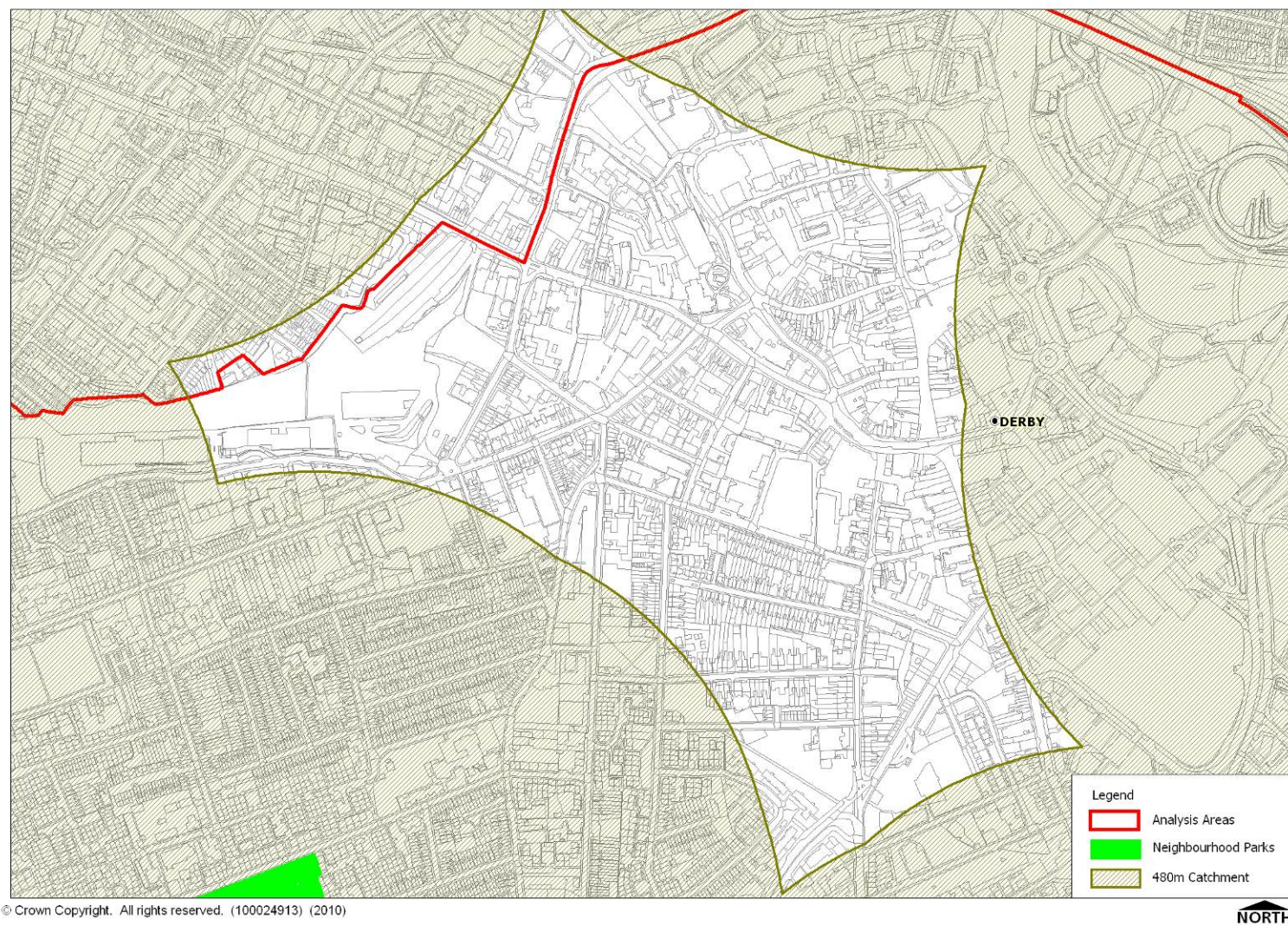


Figure 4.2 – Deficiencies in Derby city centre



- 4.124 Due to the nature of the city centre it is highly unlikely that a new park would be provided in this location. However, throughout consultation residents highlighted the need for a park or formal garden in the city centre. Riverside Gardens (1.23 hectares) is an amenity green space located alongside the River Derwent to the north east of the city centre. Based on consultation and in light of the lack of access to parks and dense urban nature of the city centre consideration should be given to formalising Riverside Gardens for the purpose of a neighbourhood park. The *6Cs Green Infrastructure Strategy* identifies the creation of Derwent River Park as a key priority. The creation of the park will provide multifunctional open space for residents in the city centre and will also provide a gateway to the Derwent Valley Mills World Heritage Site. The allocation of this site as a neighbourhood park would mean that provision in the central area is above the minimum quantity standard for neighbourhood parks.

PG7	Seek to formalise Riverside Gardens/Derwent River Park for the purpose of a neighbourhood park.
------------	--

- 4.125 Bass's Recreational Ground is the only park located in close proximity to the city centre. This site provides an important recreational resource for workers and visitors to the city centre and breaks up the urban nature of the area. In consideration of the importance of this site access routes to Bass's Recreational Ground should be enhanced. Improvements should focus on footpaths and walkways from the city centre in addition to improvements to linkages alongside the River Derwent, such as the Riverlife Way. This will mean that access to Bass's Recreational Ground will be enhanced both from the city centre and along the River Derwent. The *Derby City Centre Public Realm Strategy* emphasises the importance of the River Derwent in increasing access to open space in Derby city centre.

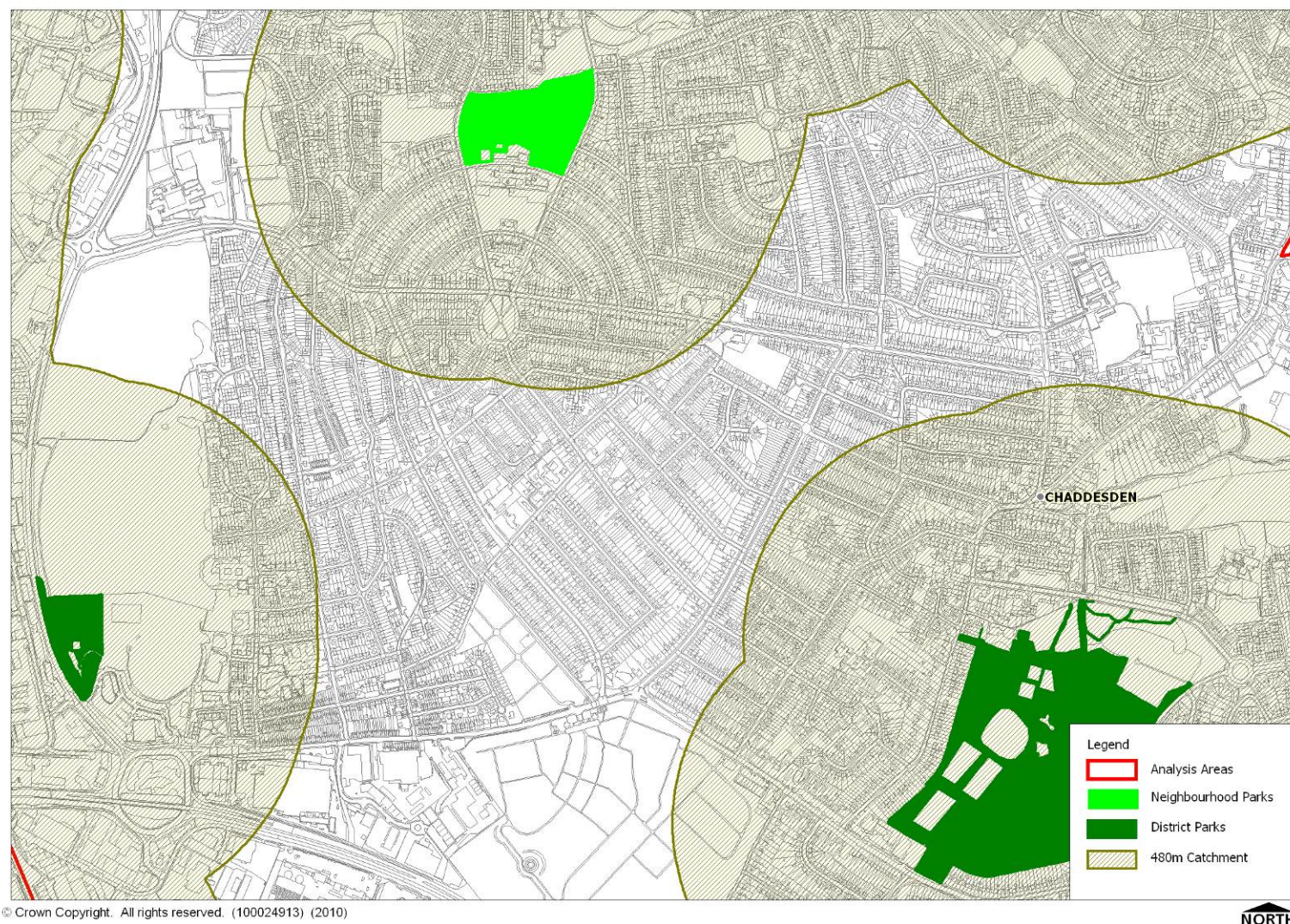
PG8	Seek to increase access to Bass's Recreational Ground. Improvements should focus on footpaths from the city centre and linkages alongside the River Derwent.
------------	---

- 4.126 Although the majority of people in the central area will be within the recommended catchment of a park, there will remain quantitative shortfalls in provision when amalgamating all types of park. Population growth (much of which is likely to be accommodated in high density housing due to the nature of the area) will exacerbate this situation. Due to the lack of opportunities to create new parks in the city centre, alternative solutions, such as green roofs, green walls, home zones and street trees may therefore need to be considered. The type of buildings that should be considered for green roofs and living walls range from shopping centres to office buildings to cultural buildings. Existing examples of encouraging biodiversity and creating a green atmosphere in buildings elsewhere in the UK include the Westfield shopping centre in west London and its "living wall" planted with wildflowers, Canary Wharf's assortment of biodiversity initiatives, and the south London Horniman Museum's green roof, one of the country's first.
- 4.127 This is discussed in further detail in Section 6.
- 4.128 Due to the lack of open space in the city centre, civic spaces play a focal point for visitors to and workers in the city centre. This will be discussed in further detail in Section 13.

North East

- 4.129 Application of the accessibility standard indicates that there is a good distribution of parks in the North East area which means that the majority of residents have access to a park within a 10 minute walk time (480 metres). Despite a good distribution of parks a large number of residents in the centre of the area (to the north of Chaddesden Park and north of Nottingham Road Cemetery) are outside the catchment of a park (Figure 4.3 overleaf).

Figure 4.3 – Deficiencies in the centre of the North East Area



- 4.130 Quantitative analysis reinforces the findings of the application of the accessibility standard, with there being a shortfall of both district parks (2.41 hectares) and neighbourhood parks (14.15 hectares). These shortfalls are expected to increase significantly in the future and suggest that additional provision may be required in order to accommodate future population increases.
- 4.131 Although residents in the area of deficiency do not have access to a park they do have access to amenity green space. Oregon Way Recreation Ground is a large amenity green space located to the north of Chaddesden Park in the area of deficiency. Policy L4 (10) of the *City of Derby Local Plan Review (2006)* identifies that 13.2 hectares of open space is allocated to link Oregon Way Recreation Ground and Windmill Hill Plantation (Chaddesden). This will create a neighbourhood park in the area of deficiency and should be supported. Policy L4 (9) further states that 8.6 hectares east of Acorn Way, Spondon is allocated for the purpose of a neighbourhood park. Although this proposed site will have a limited impact on existing accessibility deficiencies, plans should also be supported.

PG9	Support the proposals outlined in Policy L4 (9) and (10) of the <i>City of Derby Local Plan Review (2006)</i>.
------------	---

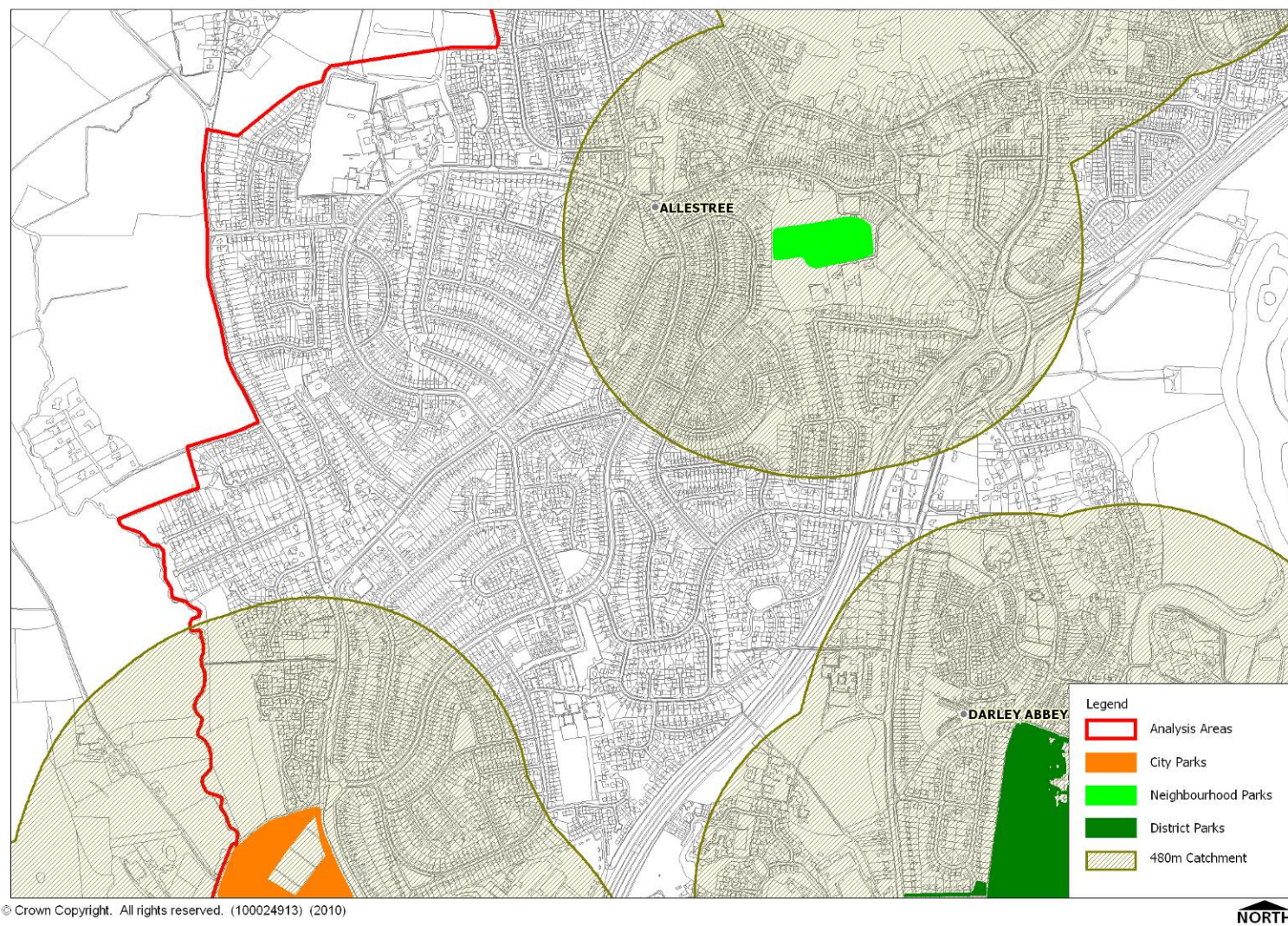
- 4.132 Residents to the north of Nottingham Road Cemetery are outside the catchment of informal open space (parks, amenity green space and natural open space). Opportunities for informal recreation are therefore limited in this area of the City. Although residents do not have access to informal open space, many houses in this area of deficiency have private gardens and furthermore residents are in close proximity to Race Course Fields and Chaddesden Park. Where new provision is not possible, focus should be placed on increasing access to Race Course Fields and Chaddesden Park. Improvements should focus on sustainable transport such as footpaths and cycleways.

PG10	Seek to increase access to Chaddesden Park and Race Course Fields, focusing on improvements to sustainable transport.
-------------	--

North West

- 4.133 The highest quantity of city parks is found in the North West area (103.51 hectares). Application of the quantity standard indicates that the current provision of district parks is sufficient to meet demand. However, there is currently a large shortfall of neighbourhood parks (13.18 hectares) which is expected to increase to 19.05 hectares by 2026. This suggests that whilst there is good provision of larger parks there is a lack of more localised smaller parks.
- 4.134 Accessibility mapping reveals that there is a good distribution of parks in the North West which means that the majority of residents have access to a park within a 10 minute walk time (480m). However, a number of residents in the west of the area to the north of Markeaton Park are outside the catchment of a site (Figure 4.4 overleaf).

Figure 4.4 – Deficiency of parks in the west of the North West Area



- 4.135 Although residents in the west of the North West area are outside the catchment of a park nearly all residents have access to amenity green space or natural open space. This means that residents do have access to some forms of informal open space. Furthermore, the majority of houses in this area have private gardens.
- 4.136 Amenity green space located in the area of deficiency is unsuitable to be converted for the purpose of a park due to its small size. In light of this, access to existing parks in the North West area should be improved, particularly Markeaton Park. Markeaton Park is located just to the south of the area of deficiency and although residents are outside the 480m catchment of this site, it is a strategic facility with a much larger catchment area. The Council should seek to improve the access to this site via public transport and green linkages, such as walkways and cycle paths.

PG11	Increase access to existing parks in the North West area. Enhance public transport links and green linkages, particularly to Markeaton Park.
-------------	---

- 4.137 As previously highlighted there is a large shortfall of neighbourhood parks that is expected to increase to 19.05 hectares by 2026. This suggests that the capacity of existing provision may be inadequate to accommodate future population increases. However, the greatest provision of city parks is found in this area and the quantity of district parks is sufficient to meet future demand (12.88 hectares). Furthermore, policy L4 (2) of the *City of Derby Local Plan Review 2006* states that there is a planned extension of 7.9 hectares of Markeaton Park and 2.4 hectares at Allestree Park. This means that the capacity of existing provision should be adequate to accommodate future population growth.

South East

- 4.138 No city parks are located in this area of the City. However, Elvaston Castle County Park is located on the eastern boundary of the area and provides an important resource for residents in this area of Derby. Access to this site for residents in the South East area is limited due to Alvaston Bypass acting as a natural barrier. This will be discussed later in this section.
- 4.139 Application of the quantity standard indicates that the current provision of both district parks and neighbourhood parks is sufficient to meet demand. However, future population increases indicate that there will be a shortfall of over 6 hectares of neighbourhood parks by 2026 suggesting that new provision may be required.
- 4.140 Although there will be an expected shortfall of over 6 hectares of neighbourhood parks by 2026 policy L4 (13) of the *City of Derby Local Plan Review 2006* states that 8 hectares of open space is allocated to extend Pit Close Lane Recreation Ground. This will therefore alleviate expected shortfalls of neighbourhood parks in the South East area and ensure that the capacity of neighbourhood parks is sufficient to accommodate future population growth. These plans should therefore be supported. Furthermore, Policy L4 (4) and (5) states that there will be an extension of 25 hectares of Whitehouse Farm Open Space and Fullen's Lock Park. This will further increase the provision of parks in the area.

PG12	Support the proposed extension of Pit Close Recreation Ground outlined in Policy L4 (13) of the <i>City of Derby Local Plan Review (2006)</i>.
-------------	---

- 4.141 Accessibility mapping indicates that parks are generally well distributed across the area. However, a large number of residents in the west of Alvaston are outside the 10 minute walk time (480 metres) of a park (Figure 4.5 overleaf).

Figure 4.5 – Deficiencies in the west of Alvaston



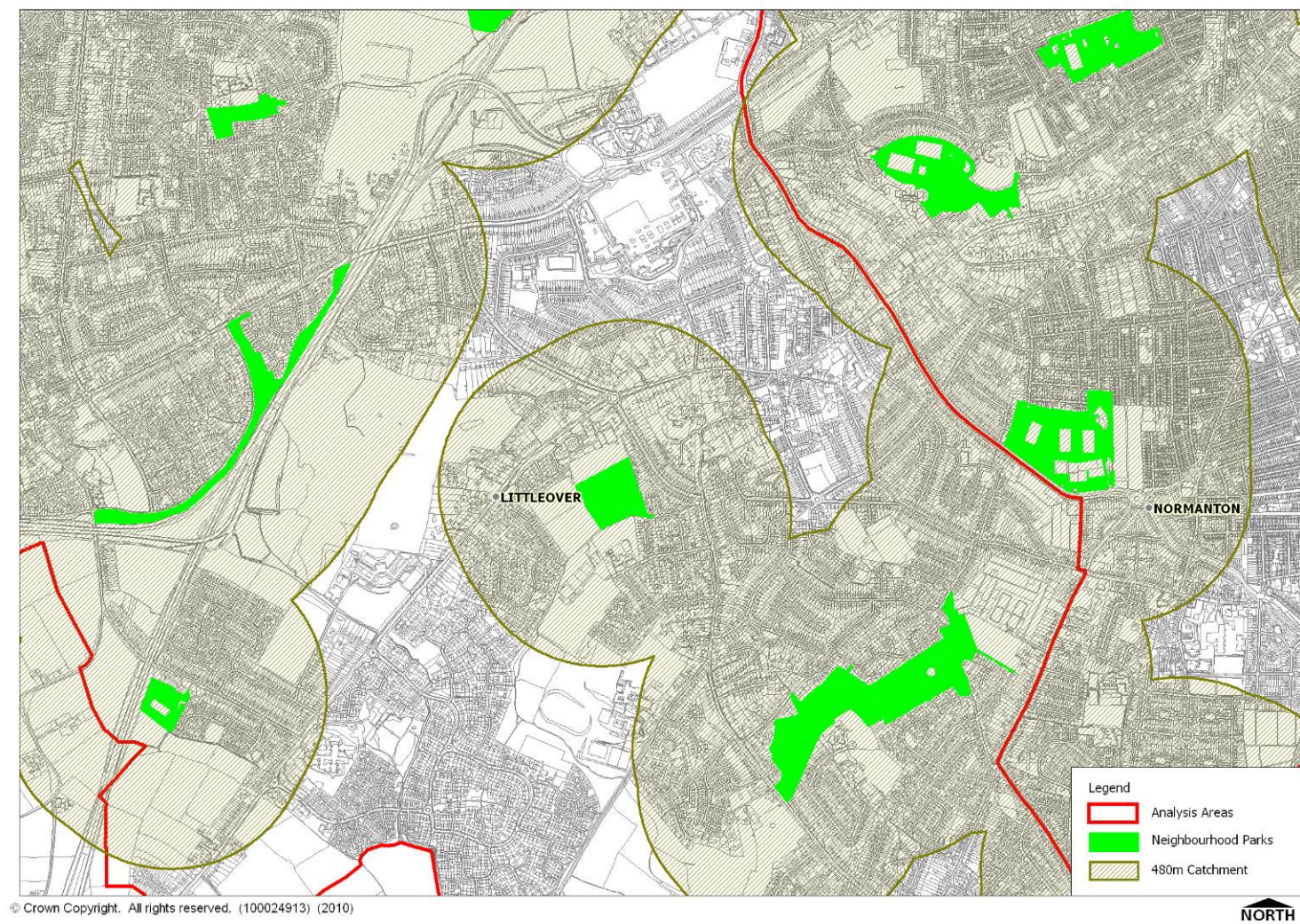
- 4.142 Although residents in the west of Alvaston are outside the catchment of a park they do have access to some form of informal open space, particularly amenity green space. Derby Canal Walk (amenity green space) and Coleman Street Meadow (natural open space) are both located in the area of existing deficiency. These two sites link together to make a large open space with a variety of facilities including a open grassland, natural open space, a play area and a multi use games area. Consideration should be given to formalising these two sites and linking them together to create a neighbourhood park environment. The natural features of the site should be kept to provide both a recreational and environmental resource for local residents. Formalising these two sites to create a neighbourhood park would mean that residents would have access to a site within a 10 minute walk time (480 metres).

PG13	Consider the formalisation of Derby Canal Walk and Coleman Street Meadow for the purpose of a neighbourhood park.
-------------	--

South West

- 4.143 No city parks or district parks are located in the South West area. This means that there is a lack of larger parks in the South West area. However, policy L4 (6), (7) and (8) of the *City of Derby Local Plan Review (2006)* indicates that there are plans for a new district park near Onslow Road in Mickleover, a 12.2 hectare extension of Mackworth Park and a 6.7 hectare extension of Clemson's Park. This will create a new district park and extend the area of two existing neighbourhood parks creating an additional two district parks. This would result in more local access to larger parks within this area. Additional provision is particularly important in this area, as this part of the city is likely to see a high level of population growth.
- 4.144 The highest quantity of neighbourhood parks is located in this area of the City (44 hectares) and application of the accessibility standard illustrates this good supply with the majority of residents have access to a neighbourhood park. Deficiencies are however evident in the south and north of Littleover (Figure 4.6 overleaf).

Figure 4.6 – Deficiencies of parks in the north and south of Littleover



- 4.145 Quantitative analysis supports the findings of the application of the accessibility standard with the provision of neighbourhood parks sufficient to meet demand.
- 4.146 Policy L4 (1) of the *Derby Local Plan Review (2006)* indicates that 46 hectares of land to the east of Moorway Lane, Littleover is allocated for the purpose of a city park. This city park would be located in the area of deficiency in the south of Littleover and would therefore provide residents with access to a park in this area of the City. To alleviate existing deficiencies of parks in the south of Littleover, the proposed city park in Littleover should be supported.

PG14	Support the development of the proposed city park in Littleover.
-------------	---

- 4.147 The majority of residents outside the catchment of a park in the north of Littleover near Derby Royal Infirmary do have access to amenity green space within a 5 minute walk time (240 metres) which means that there is access to some form of informal open space. Furthermore, houses in this area do have large private gardens which to an extent offset the need for public open space.
- 4.148 Although there is good access to amenity green space in the north of Littleover the size of these sites makes them unsuitable to be upgraded to parks. Clemson's Park is located in closest proximity to the area of deficiency in the north of Littleover. This site provides a variety of facilities including parkland, sports facilities and a children's play area. The Council should seek to increase access to Clemson's Park for residents in the north of Littleover specifically focus on increasing access to this site via sustainable transport (walking, cycling and public transport).

PG15	Increase access to Clemson's Park through sustainable transport.
-------------	---

Redesignation

- 4.149 The majority of parks in Derby serve unique catchments and are therefore valuable local facilities. There are however a number of parks located in close proximity to one another creating overlapping catchments. Sites that located in close proximity one another are as follows:
- Rykneld Recreational Ground and Stockbrook Street Recreation Ground (Central area)
 - High View Park, Priory Park and Roe Farm Recreational Ground (North East area)
 - Dale Road Public Open Space and Elvaston Lane Recreation Ground (South East area)
- 4.150 Figures 4.7 – 4.9 overleaf illustrate those sites identified above.

Figure 4.7 – Overlapping catchments to the west of Derby City Centre

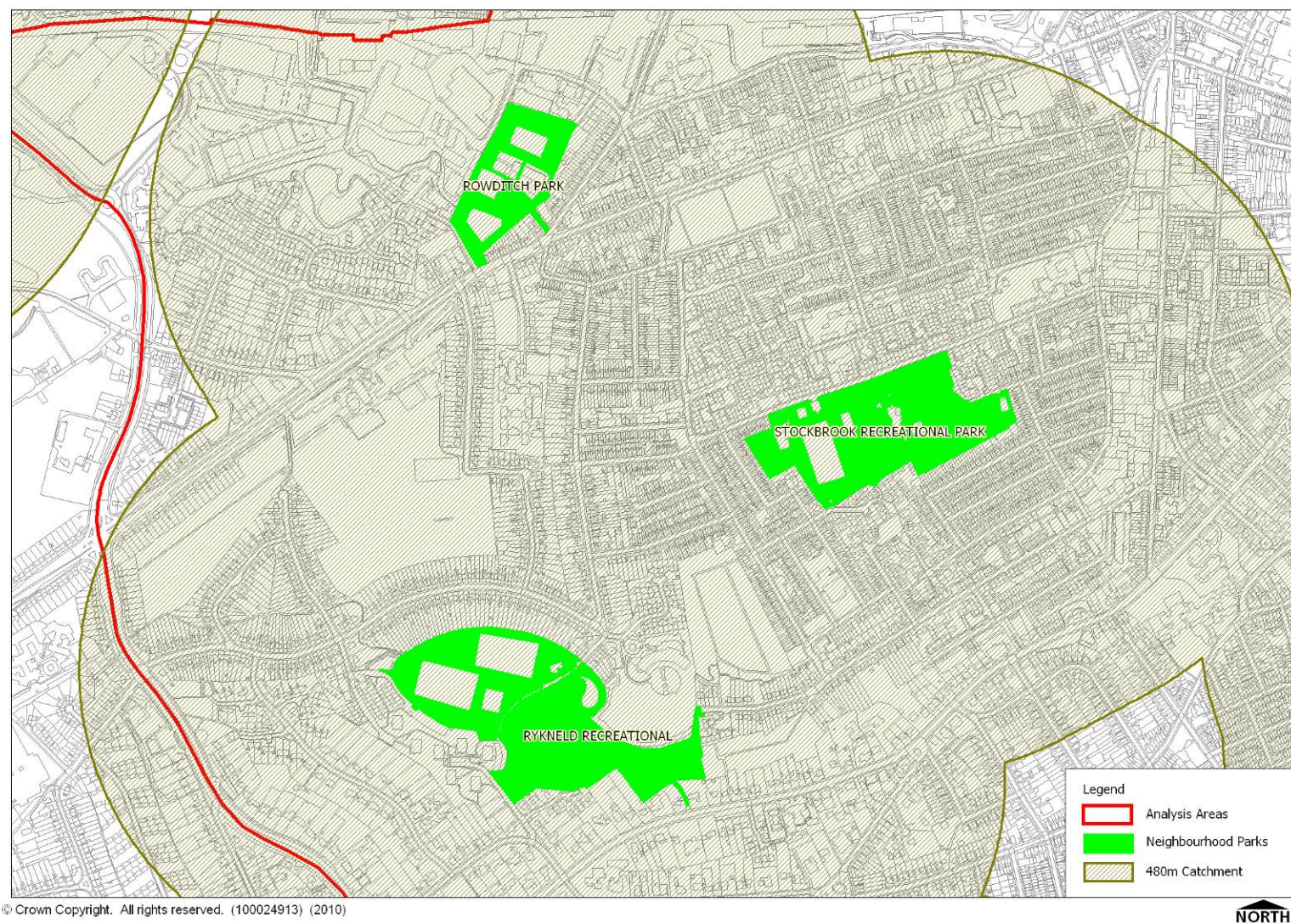


Figure 4.8– Overlapping catchments in the north west of Chaddesden

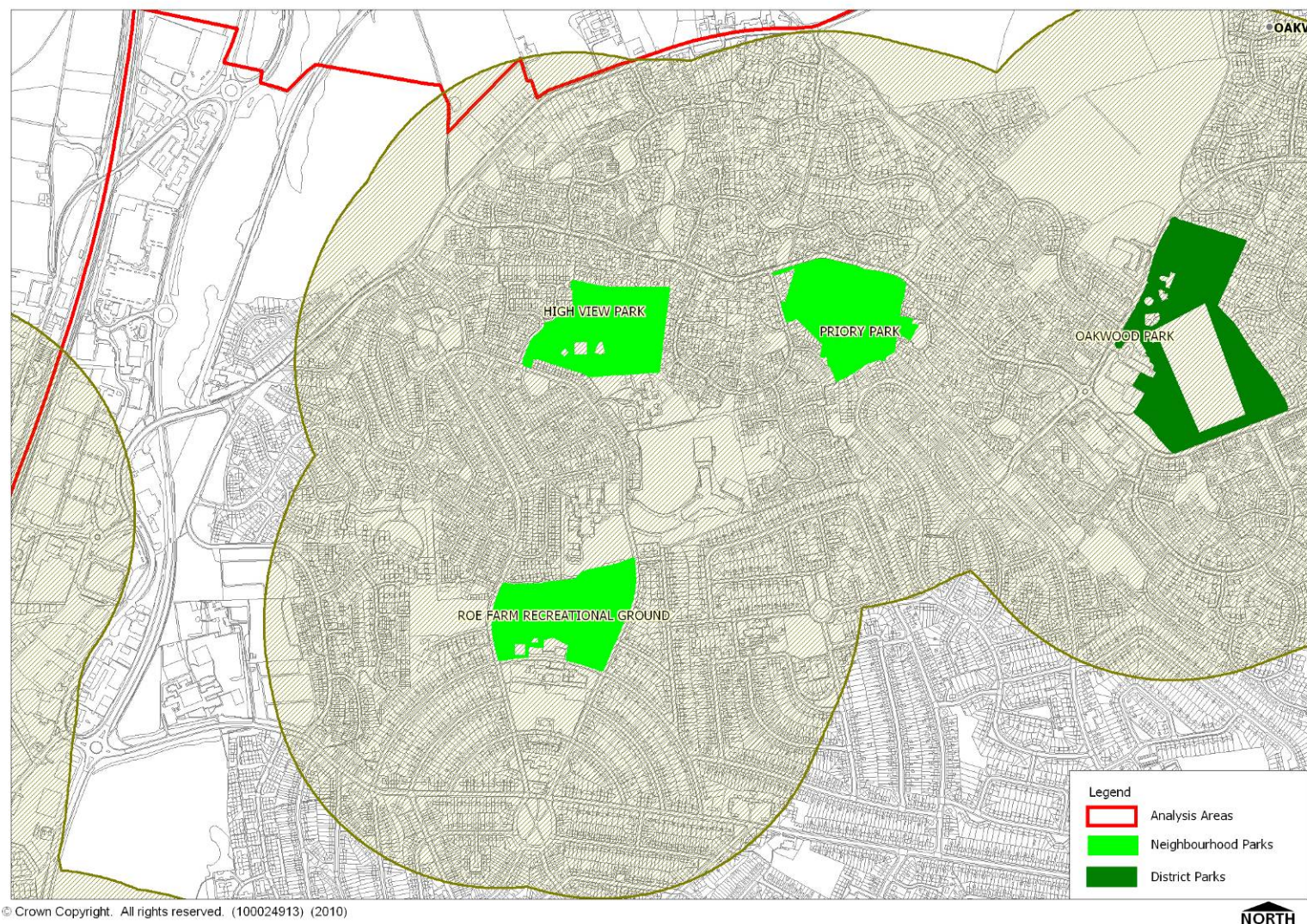
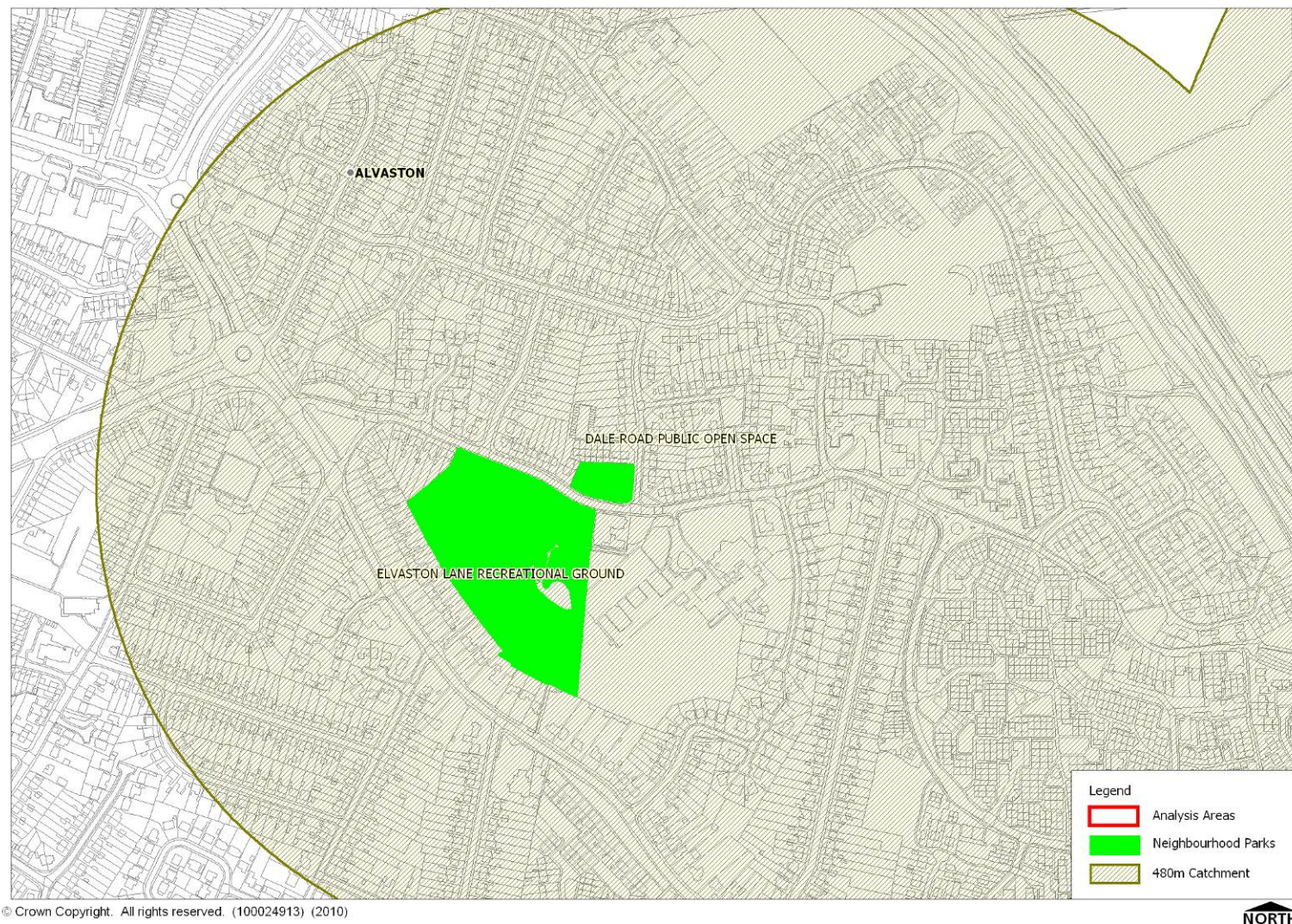


Figure 4.9 – Overlapping catchments in Alvaston



- 4.151 Although there are some overlapping catchments in the Central and North East areas, future population projections indicate that there will be an expected shortfall of both district and neighbourhood parks. This suggests that existing parks in the areas are valuable and will be required to accommodate future population growth.
- 4.152 The provision of district parks within the South East area is sufficient to meet demand. However, population projections indicate that there will be an expected shortfall of over 6 hectares of neighbourhood parks.
- 4.153 Access to other forms of informal open space (amenity green space and natural open space) where parks are serving similar catchments is good in the North East and Central areas.
- 4.154 Within the South East area, where parks are serving similar catchments, access to natural open space is limited. In light of this, consideration should be given to the redesignation of a Dale Road Public Open Space (neighbourhood park) as a natural open space, or the provision of natural open space within Elvaston Lane Recreation Ground.

PG16	Consider the redesignation of Dale Road Public Open Space for the purpose of natural or semi natural open space, or the provision of natural or semi natural open space within Elvaston Lane Recreation Ground to alleviate access deficiencies to natural open space and semi natural open space. This would be of particular benefit in Boulton Moor. This links with recommendation PG4.
-------------	--

Increasing Access to Parks

- 4.155 Good access to parks is as important as the provision of high quality sites, as without effective access routes, sites will be underused and consequently undervalued. Parks are highly valued by residents in Derby and a lack of access to parks was identified as a key determinant of usage during consultation. Green linkages were seen as a particular priority and essential if the network of green spaces is to be accessible to resident across the city.
- 4.156 Access to city parks in Derby is particularly important due to the fact that these sites are particularly well used by visitors to Derby and residents travel across the City to access these sites. The Council should focus on enhancing public transport links to city parks in Derby and encourage other forms of sustainable travel through the development of green linkages. Ensuring adequate signage is displayed to and around the sites will also be important. The location of such sites on public bus routes etcetera will also be of further benefit to residents.

PG17	Increase access to city parks in Derby. Focus on enhancing public transport links and developing green linkages to sites. This links to recommendation PG11.
-------------	---

- 4.157 Elvaston Castle Country Park is located just outside the City boundary to the east of Boulton Moor. This site is particularly valuable to residents in the south east of the City and is regularly used by residents in this area of the City. In consideration of the importance of this site, the Council should seek to increase access to Elvaston Castle Country Park. As previously highlighted, the Alvaston Bypass acts a natural barrier to local residents trying to access this site on foot. The Council should therefore seek to footpaths and walkways to this site, potentially via a bridge. This will be particularly beneficial for residents in Boulton Moor.

PG18	Seek to increase access to Elvaston Castle Country Park. To improve local access for residents in Boulton Moor, seek to enhance walkways and footpaths to this site.
-------------	---

4.158 District parks and neighbourhood parks are more local facilities and are expected to be provided in close proximity to the home. Increasing access to these sites, particularly in areas where there is limited or no provision, is essential.

4.159 The Council should seek to enhance green linkages to district and neighbourhood parks, focusing on enhancing existing infrastructure, such as footpaths and cyclepaths. Linkages alongside the River Derwent offer an excellent opportunity to enhance access to existing parks and open spaces and to link these facilities, providing corridors of provision.

PG19	Seek to increase access to existing district and neighbourhood parks through the development of green linkages and the enhancement of existing infrastructure for example, footpaths and cyclepaths. Maximise opportunities to increase access to parks and open spaces alongside the River Derwent. This links to recommendations PG8 and PG10.
-------------	---

Summary

4.160 Parks are highly valued open spaces in Derby. Parks are the most frequently used type of open space in the City and city parks are well used by residents located across the City and visitors who travel from outside of Derby.

4.161 There is a variety of parks in Derby providing a number of functions. Sites range from those which contain many facilities and serve a primarily recreational function such as Markeaton Park to sites such as Sinfin Moor which provide more aesthetic and environmental benefits. There are a number of parks that have both recreational and environmental functions and parks therefore provide both recreational and environmental benefits for residents in and visitors to Derby. The variety of parks in Derby was identified as one of the main reasons why this type of open space is used more frequently than any other by residents in Derby.

4.162 Parks, particularly larger parks, were perceived to be of high quality. Sites were perceived to be well maintained and this is supported by findings of the site assessments. However, the need for increased infrastructure, particularly at parks which attract a large number of visitors, was identified as an area for improvement at parks in Derby.

4.163 Application of the quantity standard indicates that there is an overall minor shortfall of both district parks (1.56 hectares) and neighbourhood parks (1.51 hectares). There are however localised deficiencies and future population projections indicate that shortfalls are expected to increase significantly suggesting that new provision will be required. Policy L4 of the *Derby Local Plan Review (2006)* does outline plans to address this issue by allocating new parks or extending existing sites. This will reduce existing accessibility deficiencies and increase the capacity of existing provision meaning that parks will be able to accommodate future population growth. Analysis of the proposed locations of these parks suggests that their creation would be instrumental in addressing existing gaps in provision.

- 4.164 Accessibility mapping reveals that there is a good distribution of parks in Derby with the majority of residents having access to a park within a 10 minute walk time (480 metres).
- 4.165 It is therefore recommended that the key priorities for the future delivery of provision of parks in Derby through the Local Development Framework (LDF) and/or other mechanisms are:
- ensure that the LDF contains policies that protect parks from development;
 - drive a strategic programme of qualitative improvements using the findings of site assessments to create a network of sustainable parks;
 - maximise the sustainability of parks by continuing to promote friends groups and events at these facilities;
 - consider upgrading Riverside Gardens, Oregon Way Recreation Ground, Derby Canal Walk and Coleman Street Meadow for the purpose of neighbourhood parks;
 - support the development of the proposed city park in Littleover;
 - support the proposals to increase the provision of parks outlined in policy L4 (9), (10) and (13) of the *City of Derby Local Plan Review (2006)*;
 - consider the inclusion of natural and semi natural open space within parks, in particular in Boulton Moor where access to natural open space is limited, to ensure that these sites are valuable for biodiversity as well as recreation; and
 - increase access to existing parks, including Elvaston Castle Country Park, through the development of the public transport network, green linkages and enhancement of existing infrastructure.